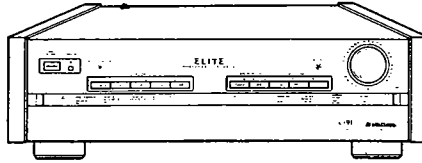


6/86

 **PIONEER**[®]
The future of sound and vision.

Service Manual



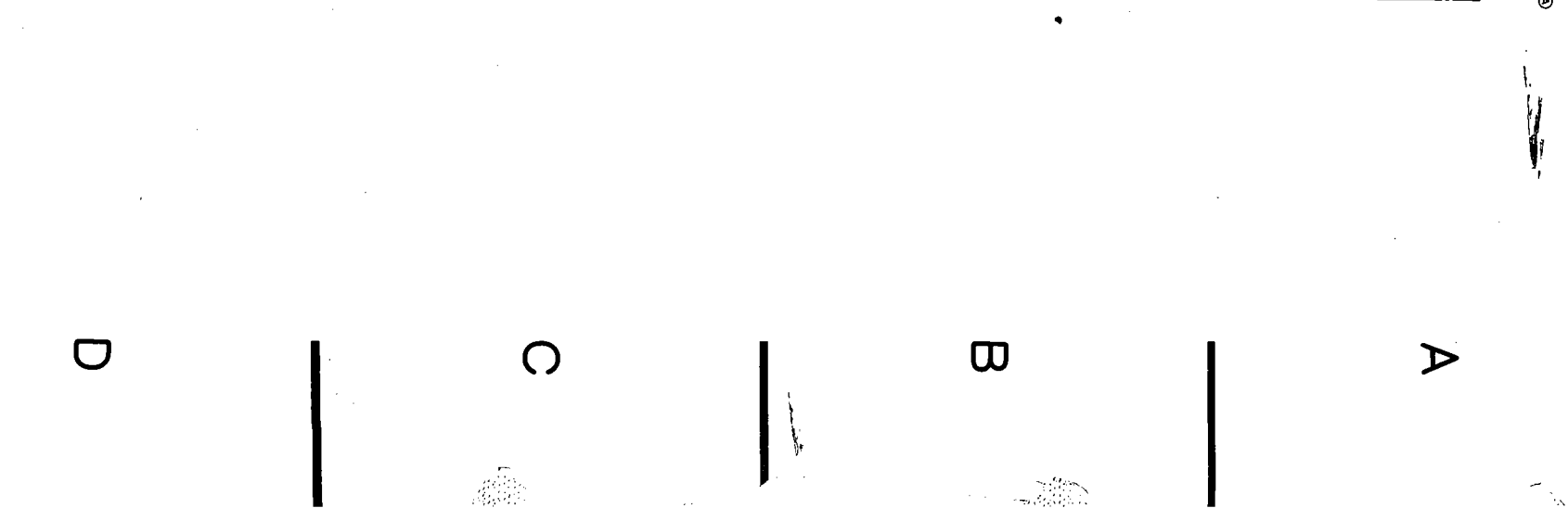
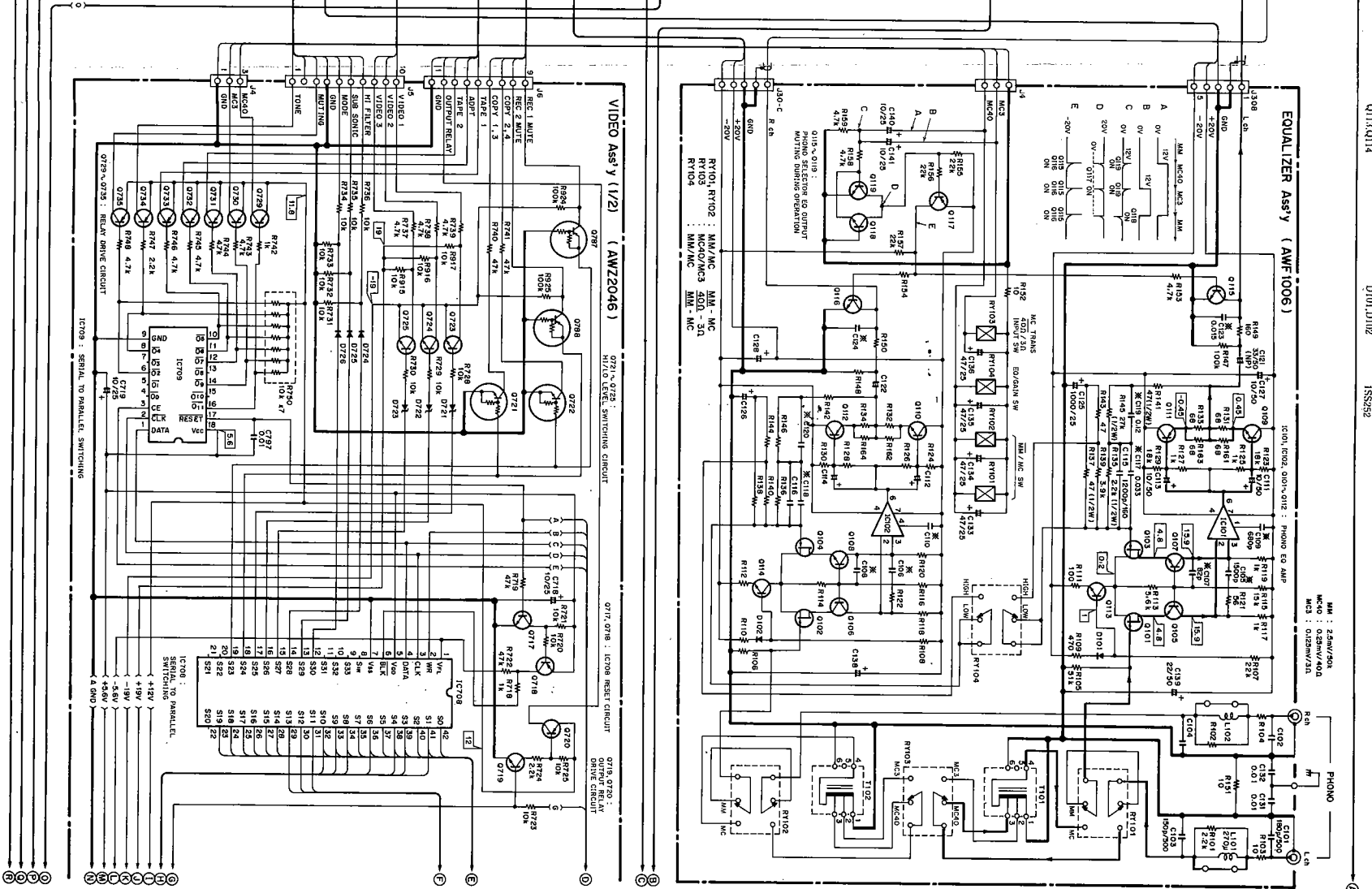
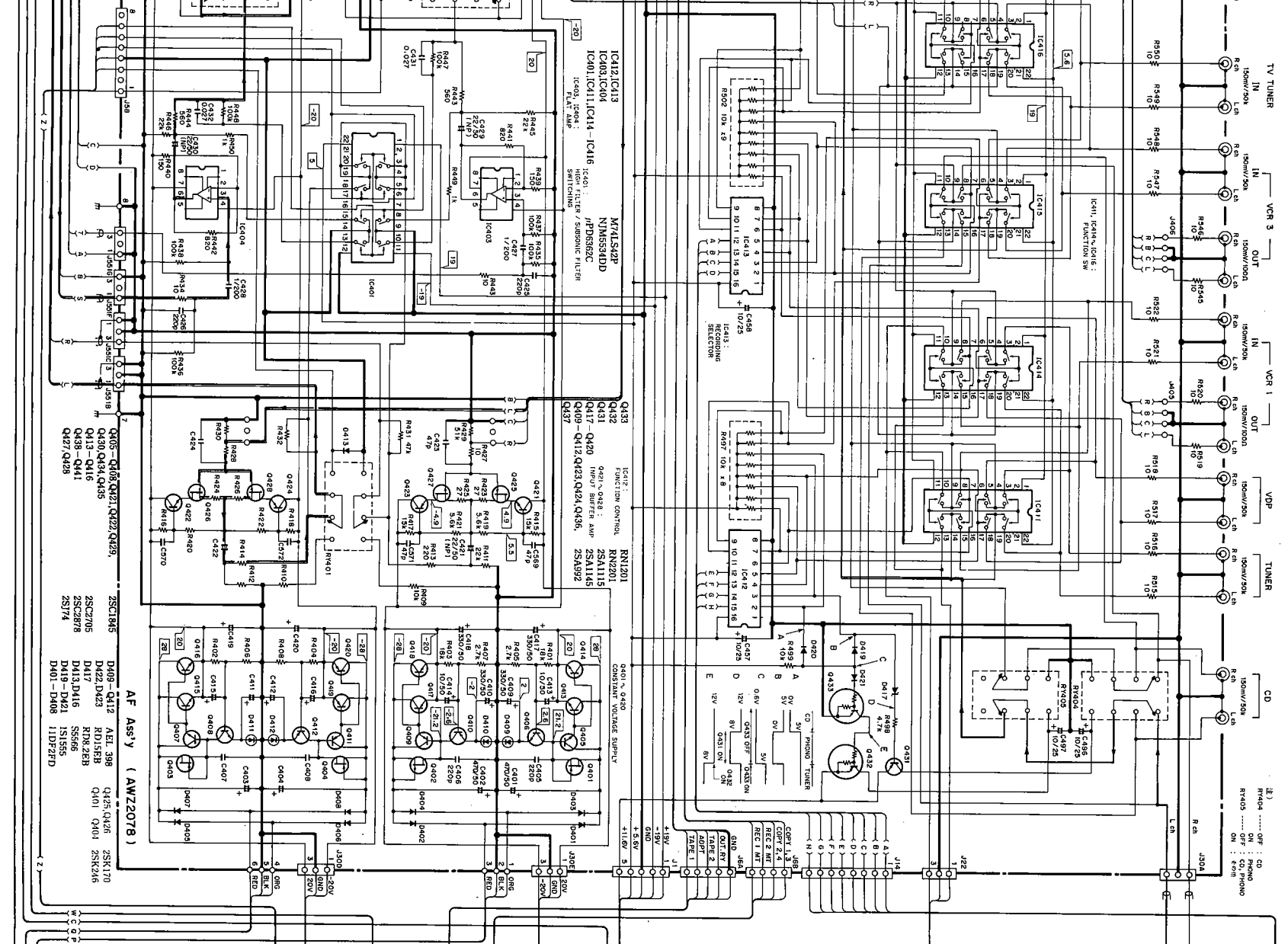
**ORDER NO.
ARZ1636**

STEREO CONTROL AMPLIFIER

C-91

PIONEER ELECTRONIC CORPORATION 4-1, Meguro 1-Chome, Meguro-ku, Tokyo 153, Japan
PIONEER ELECTRONICS SERVICE INC. P.O. Box 1760, Long Beach, California 90801 U.S.A.
PIONEER ELECTRONICS OF CANADA, INC. 505 Cochrane Drive, Markham, Ontario L3R 8E3 Canada
PIONEER ELECTRONIC [EUROPE] N.V. Keetberglaan 1, 2740 Beveren, Belgium
PIONEER ELECTRONICS AUSTRALIA PTY. LTD. 178-184 Boundary Road, Braeside, Victoria 3195, Australia TEL: [03] 580-9911
PIONEER ELECTRONIC CORPORATION 1988





AF assembly (AWZ2078)

SEMICONDUCTORS

Mark	Symbol & Description	Part No.
	C138, C139	CEXA220M50
	C121, C122	CEYANP330M50
	C131, C132	CKCYF103Z50
	C103, C104	CMA151J500
	C101, C102	CMA181J500
	C115, C116	CO5XA122J160

RESISTORS

Mark	Symbol & Description	Part No.
	R135, R136, R145, R146	RDR1/2PM□□□F
	R137, R138, R141, R142	RDR1/2PM□□□J
	R131 - R134, R161 - R164	RD1/4PMFL680J
	R152	RD1/4PM100J
	R153 - R159	RD1/8PM□□□J
	Other resistors	RDR1/4PM□□□J

OTHERS

Mark	Symbol & Description	Part No.
	Terminal 2P (PHONO)	AKB1001

Control assembly (AWZ1055)

SEMICONDUCTORS

Mark	Symbol & Description	Part No.
	IC304, IC305	M74LS42P
	IC301	PDE012
	IC302, IC303	PD0012A
	Q301, Q302	2SC2458
	D301 - D306	1SS131

COILS

Mark	Symbol & Description	Part No.
	X301 Ceramic resonator	ASS-046
	L301 Inductor (1mH)	ATH-098

CAPACITORS

Mark	Symbol & Description	Part No.
	C305, C306	CCDCH101J50
	C301, C304	CEANL470M16
	C307 - C310	CEAS100M25
	C302, C303	CKDYB103K50
	C313	CKDYB103K500
	C311, C312	CKDYF103Z50

RESISTORS

Mark	Symbol & Description	Part No.
	R301 Resistor array	RA4S103J
	R310 Resistor array	RA8S103J
	Other resistors	RD1/8PM□□□J

AF assembly (AWZ2078)

SEMICONDUCTORS

Mark	Symbol & Description	Part No.
	IC417, IC418	LC4966
	IC407 - IC410	M5201P
	IC405, IC406	M5220P
	IC412, IC413	M74LS42P
	IC403, IC404	NJM5534DD
	IC401, IC411, IC414 - IC416	μPD6362C

RESISTORS

Mark	Symbol & Description	Part No.
	Q433	RN1201
	Q432	RN2201
	Q431	2SA1115
	Q417 - Q420	2SA1145
	Q409 - Q412, Q423, Q424, Q436, Q437	2SA992
	Q405 - Q408, Q421, Q422, Q429, Q430, Q434, Q435	2SC1845
	Q413 - Q416	2SC2705
	Q438 - Q441	2SC2878
	Q427, Q428	2SJ74
	Q425, Q426	2SK170
	Q401 - Q404	2SK246
	D409 - Q412	AE1-398
	D422, D423 Zener diode	RD15EB
	D417 Zener diode	RD8.2EB
	D413, D416	S5566
	D419 - D421	1S1555
	D401 - D408	11DF2FD

OTHERS

Mark	Symbol & Description	Part No.
	Terminal 4P (TAP E1, AUDIO ADAP, VCR1)	AKB-115
	Terminal 6P	AKB-117
	Terminal 6P	AKB1005
	Terminal 6P	AKB1066
	Other resistors	RDR1/4PM□□□J

Video assembly (AWZ2046)

SEMICONDUCTORS

Mark	Symbol & Description	Part No.
	IC708	LC7570
	IC709	PD0012A
	IC707	TC4011BP
	IC701 - IC706	TC4066BP
	IC710	TC4069UBP
	Q716	RN1201
	Q721, Q722	RN1203
	Q787, Q788	RN2203
	Q714, Q715, Q718, Q720, Q726, Q729 - Q736, Q747, Q749, Q751, Q752, Q766, Q781, Q783, Q785	2SA1115
	Q704	2SA1145
	Q739, Q745	2SA1346
	Q708, Q742	2SA985A
	Q741	2SC2275
	Q717, Q719, Q723 - Q725, Q737, Q743, Q748, Q750, Q753 - Q765, Q767 - Q774, Q776 - Q779, Q786	2SC2603
	Q702	2SC2705
	Q713, Q744, Q780, Q782, Q784	2SC2878
	Q728, Q738, Q740, Q746	2SC3400
	Q706, Q710, Q712	2SD836A
	Q701, Q703, Q705, Q707, Q709, Q711	2SK246

CAPACITORS

Mark	Symbol & Description	Part No.
	C717 (47000 μF/5.5V)	ACH1070
	C745	CCCCH121J50
	C740, C742	CCCCH330J50
	C764	CCCCH470J50
	C763	CCCCH680J50
	C749, C787, C794	CCCCL101J50
	C739, C785	CCCCL221J50
	C743, C793	CCCCL270J50
	C747, C759, C768, C771	CCCCL330J50
	C766	CCCCL390J50
	C781	CEAS010M50
	C718, C719, C723, C744, C754, C792, C796	CEAS100M25
	C722	CEAS100M50
	C708, C710, C724, C725, C738, C751, C760, C783, C784	CEAS101M10
	C748, C750, C769, C772, C776, C777	CEAS101M16
	C703 - C706, C712	CEXA101M25
	C729, C732, C733, D736, C773 - C775	CEAS102M10
	C791	CEAS102M6
	C713	CEAS101M25
	C711	CEAS102M25

AF assembly (AWZ2078)

SEMICONDUCTORS

Mark	Symbol & Description	Part No.
	D713 Zener diode	RD13EB
	D714 Zener diode	RD13ESB3
	D721 - D723 Zener diode	RD18EB
	D753 Zener diode	RD2.7ESB
	D709, D710 Zener diode	RD20ESB2
	D729, D730 Zener diode	RD4.3ESB1
	D750 Zener diode	RD5.6ESB2
	D743 Zener diode	RD6.2ESB2
	D712 Zener diode	RD6.8ESB2
	D711 Zener diode	1SS252
	D724 - D726, D731 - D733, D735 - D742, D744, D746, D751, D752	10E2FD
	D715 - D718	S5566
	D701 - D708, D747	

COILS

Mark	Symbol & Description	Part No.
	L701 - L704 Inductor (100 μH)	ATH-050
	L712 Inductor (5.6 μH)	ATH-065
	L708 Inductor (15 μH)	ATH-075
	L705, L711 Inductor (10 μH)	ATH-078
	L714 Inductor (47 μH)	ATH-082
	L716, L717 Inductor (1mH)	ATH-098
	L710 Inductor (33 μH)	ATH-100
	L706, L707, L713 Inductor (56 μH)	ATH-104
	DL701 Delay cable	ATL-034

5. SCHEMATIC DIAGRAM

A

1. RESISTORS:
Indicated in Ω, 1/4W, and 1/8W, ±5% tolerance unless otherwise noted. K, M, ML, (F), ±1%, (G), ±2%, (K), ±10%, (M), ±20% tolerance
2. CAPACITORS:
Indicated in capacity (µF/voltage V) unless otherwise noted. p, pf, indication without voltage is 50V except electrolytic capacitor.
3. VOLTAGE, CURRENT:
V: Signal voltage at W + W, 8Ω output (1 KH)
V: DC voltage (V) at no input signal value in () is DC voltage at rated power.

4. OTHERS:
○: Signal route.
△: Adjusting point.
The △ mark found on some component parts indicates the importance of the safety factor of the part. Therefore, when replacing, be sure to use parts of identical designation.
X: marked capacitors and resistors have parts numbers.
The underlined indicates the switch position.

This is the basic schematic diagram, but the actual circuit may vary due to improvements in design.

5. SWITCH
S1: Power switch ON - OFF

- S341: V. D. P.
- S342: VIDEO 1
- S343: VIDEO 2
- S344: VIDEO 3
- S345: VAUX
- S346: CD
- S347: PHONO
- S348: TUNER
- S349: TAPE 1
- S350: TAPE 2
- S351: RECSEL
- S352: AUDIO ADAPTOR
- S353: VIDEO ADAPTOR
- S354: ENHANCER
- S355: HIGH CUT
- S356: SUBSONIC FILTER
- S357: MODE
- S358: DUBBING
- S359: PHONO SELECTOR
- S360: MUTE
- S361: VIDEO FUNCTION
- S362: STAND-BY
- S391: TONE

The underlined indicates the switch position.

D

C

B

15

1

2

2

3

3

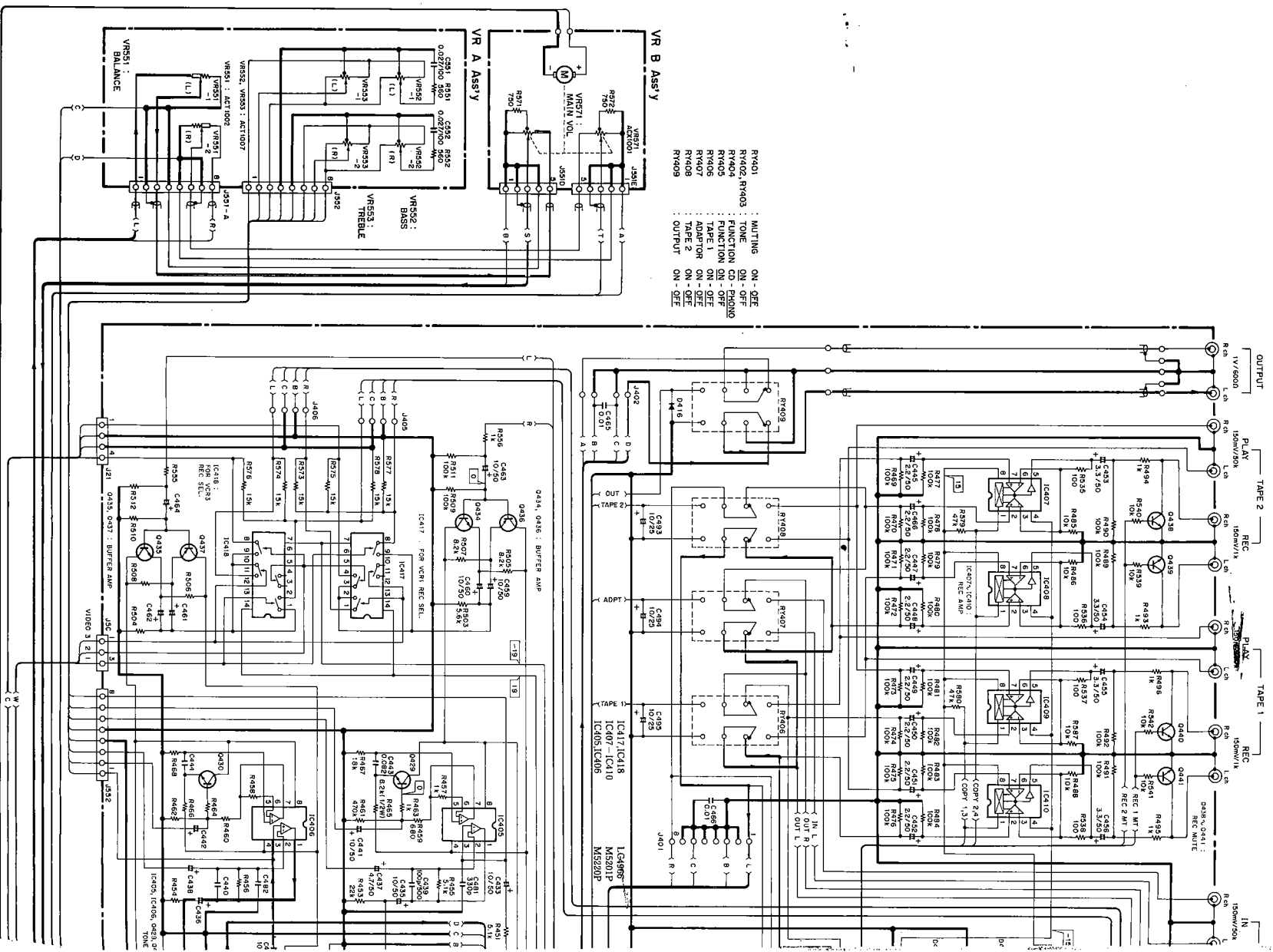
4

4

5

5

6



SWITCHES

Mark	Symbol & Description	Part No.
	S341 - S362 Tact switch (MUTE, VIDEO ADAP- TOR, TAPE1, V/AUX, V.D.P, VIDEO1, CD, TAPE2, ENHANCER, MODE, VIDEO FUNCTION, DUBING, HI CUT, REC SEL, PHONO, VIDEO2, VIDEO3, TUNER, AUDIO ADAPTOR, SUB- SONIC FILTER, PHONO SELECTOR, STAND BY)	ASSG-711

Terminal assembly

Mark	Symbol & Description	Part No.
	C798 - C800	CKCYF473Z50

CAPACITORS

Mark	Symbol & Description	Part No.
	R911	RD1/8PM750J

RESISTORS

Mark	Symbol & Description	Part No.
	Terminal 1P (VIDEO2 OUT, VIDEO2 IN)	AKB1004

OTHERS

Mark	Symbol & Description	Part No.

RESISTORS

Mark	Symbol & Description	Part No.
	R342, R343 Resistor array	RA4S391J
	R346 Resistor array	RA5S391J
	Other resistors	RD1/8PM□□□J

VR assembly
SEMICONDUCTOR

Mark	Symbol & Description	Part No.
	D745	1SS252

RESISTORS

Mark	Symbol & Description	Part No.
	VR701 - VR703 Variable resistor (1k)	ACT1003

Fuse assembly

COIL

Mark	Symbol & Description	Part No.
	L715 Line filter	ATF-163

Mark	Symbol & Description	Part No.
	D602, D604, D606 Zener diode	RD13ESB2
	D607 Zener diode	RD5.1ESB1
	D608 - D619	1SS252
	D601, D603, D605	11E2
	D620	RD6.8ESB2

CAPACITORS

Mark	Symbol & Description	Part No.
	C619, C620, C625, C626, C631, C632	CCCSL330J50
	C622, C628, C634	CEAS101M10
	C601, C603, C605, C607, C609, C611, C613, C615, C617, C624, C630, C636, C642	CEAS101M16

Mark	Symbol & Description	Part No.
	C621, C627, C633	CEAS102M10
	C637 - C640	CEAS330M25
	C623, C629, C635	CEAS331M16
	C602, C604, C606, C608, C610, C612, C614, C616, C618	CEAS470M16
	C641	CEAS470M25
	C643, C644	CKDYX473M25

RESISTORS

Mark	Symbol & Description	Part No.
	R670 Resistor array	RA6S104J
	R609, R610, R615, R616, R623, R624, R629, R630, R637, R638, R643, R644	RD1/2PM□□□J
	R649	RD1/4PM222J
	R650	RS1LMF4R7J

Other resistors

Mark	Symbol & Description	Part No.
		RD1/8PM□□□J

OTHERS

Mark	Symbol & Description	Part No.
	4P Mini DIN socket (VCR1, VCR3, TV/AUX IN, MONITOR OUT)	AKP1016

SW.A assembly (AWZ1056)

SEMICONDUCTORS

Mark	Symbol & Description	Part No.
	D349, D351, D353, D355, D357, D368 - D372	AEL-451
	D341 - D348, D359 - D366, D373 - D381	AEL1004
	D350, D352, D354, D356, D358	AEL1005

Mark	Symbol & Description	Part No.
	C752, C753	CEAS220M16
	C756	CEAS221M10
	C728, C731, C735	CEAS221M16
	C761	CEAS331M16
	C714, C801	CEAS332M25

Mark	Symbol & Description	Part No.
	C780	CEAS4R7M50
	C737, C741, C788, C789	CEAS470M10
	C758, C770	CEAS470M16
	C727, C730, C734, C778	CEAS470M25
	C709, C726, C757	CEAS471M10

Mark	Symbol & Description	Part No.
	C701, C702	CEAS471M35
	C707	CEHAQ101M10
	C715, C716	CEHAQ101M25
	C746, C762	CKCYF102Z50
	C755, C765, C767, C782, C797	CKCYF103Z50
	C720, C721	CKCYF473Z50

RESISTORS

Mark	Symbol & Description	Part No.
	R750 Resistor array	RA7S103J
	R795, R800, R835, R883, R887, R891	RD1/2PM□□□J
	R779, R781, R789, R791, R901, R903	RD1/4PM□□□J
	R867	FEA1/4PL680J

Other resistors

Mark	Symbol & Description	Part No.
	R912 - R914	FEA1/4PS□□□J
	R904	RS1LMF4R7J
		RD1/8PM□□□J

OTHERS

Mark	Symbol & Description	Part No.
	Terminal 3P (VIDEO1, VIDEO3)	AKB-134
	Terminal 3P (V ADAPTOR)	AKB1067
	Terminal 1P (MON.)	AKB1068
	Mini Jack (REMOTE CONTROL)	AKN-207
	5P DIN socket (RF:MOD)	AKP-081

Video assembly (AWQ1004)

SEMICONDUCTORS

Mark	Symbol & Description	Part No.
	IC601 - IC606	CX-894
	IC608, IC609	TC4053BP
	IC607	TC4066BP

Mark	Symbol & Description	Part No.
	O601, O602, O605, O608, O609, O610	2SA1048
	O619	2SA965
	O613, O615, O617	2SC2235
	O603, O604, O607, O608, O611, O612, O620	2SC2458
	O614, O616, O618	2SK246

SW.A assembly (AWZ1056)

SEMICONDUCTORS

Mark	Symbol & Description	Part No.
	D349, D351, D353, D355, D357, D368 - D372	AEL-451
	D341 - D348, D359 - D366, D373 - D381	AEL1004
	D350, D352, D354, D356, D358	AEL1005

Mark	Symbol & Description	Part No.
	D349, D351, D353, D355, D357, D368 - D372	AEL-451
	D341 - D348, D359 - D366, D373 - D381	AEL1004
	D350, D352, D354, D356, D358	AEL1005

VR.B assembly

RESISTORS

Mark	Symbol & Description	Part No.
	VR571 Variable resistor (15k x 2)	ACX1017
	R571, R572	RD1/4PM751J

Mark	Symbol & Description	Part No.
	VR551 Variable resistor (50k x 2)	ACT1002
	VR552, VR553 Variable resistor (10k x 2)	ACT1007
	R551, R552	RD1/4PM561J

Mark	Symbol & Description	Part No.
	C551, C552 Polyester capacitor	COMXA273J100

RESISTORS

Mark	Symbol & Description	Part No.
	VR551 Variable resistor (50k x 2)	ACT1002
	VR552, VR553 Variable resistor (10k x 2)	ACT1007
	R551, R552	RD1/4PM561J

VR.A assembly

CAPACITORS

Mark	Symbol & Description	Part No.
	C551, C552 Polyester capacitor	COMXA273J100

RESISTORS

Mark	Symbol & Description	Part No.
	VR551 Variable resistor (50k x 2)	ACT1002
	VR552, VR553 Variable resistor (10k x 2)	ACT1007
	R551, R552	RD1/4PM561J

SW.B assembly

SWITCH

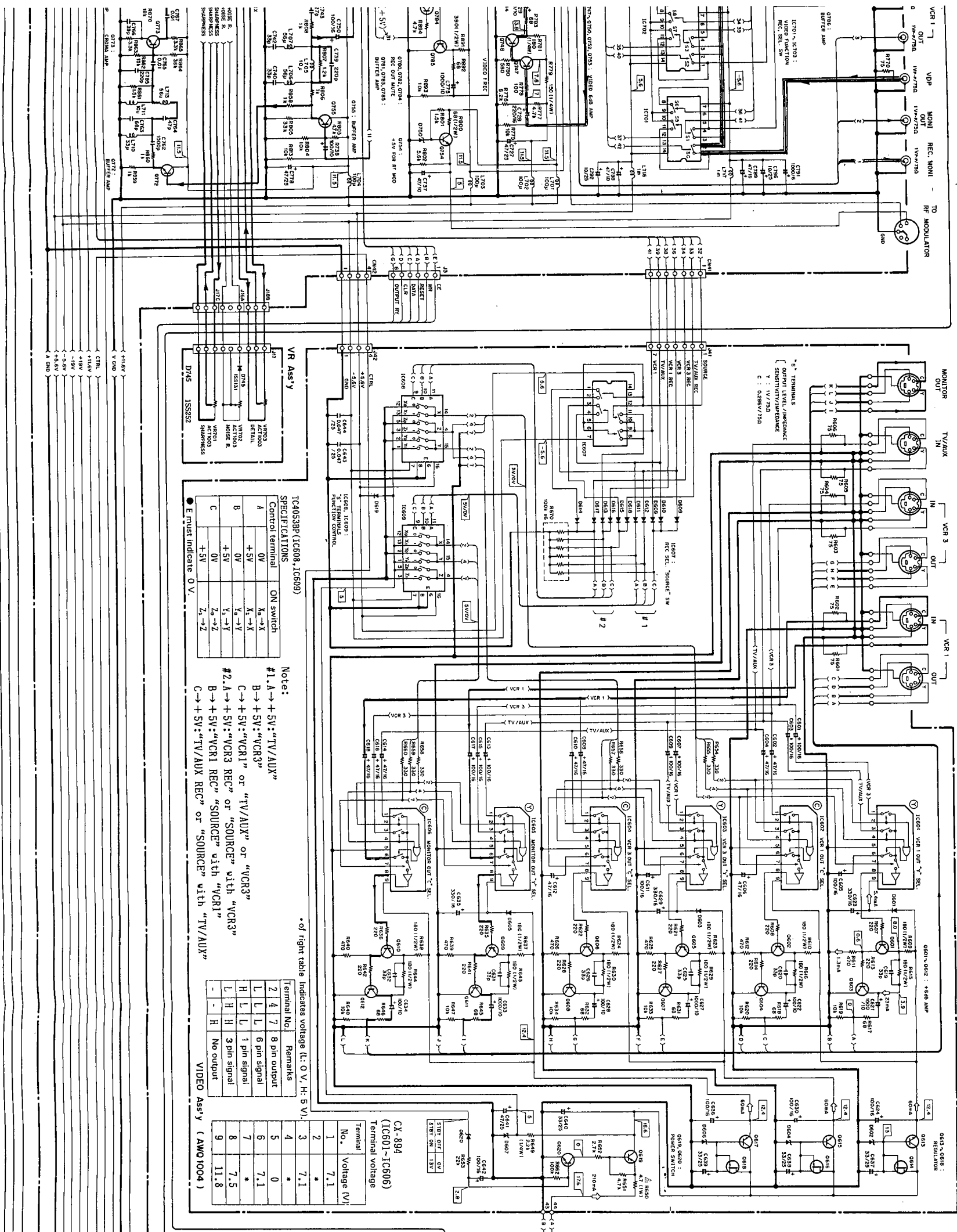
Mark	Symbol & Description	Part No.
	S391 Tact switch (TONE)	ASG-711

VR.B assembly

RESISTORS

Mark	Symbol & Description	Part No.
	VR571 Variable resistor (15k x 2)	ACX1017
	R571, R572	RD1/4PM751J

Mark	Symbol & Description	Part No.
	VR551 Variable resistor (50k x 2)	ACT1002
	VR552, VR553 Variable resistor (10k x 2)	ACT1007
	R551, R552	RD1/4PM561J



TC4053BP (IC608, IC609)
SPECIFICATIONS

Control Terminal	ON switch
A	K ₁ → X
B	+SV → VCR3
C	0V → Y
	Y ₁ → Y
	Y ₂ → Y
	Z ₁ → Z
	Z ₂ → Z
	+SV

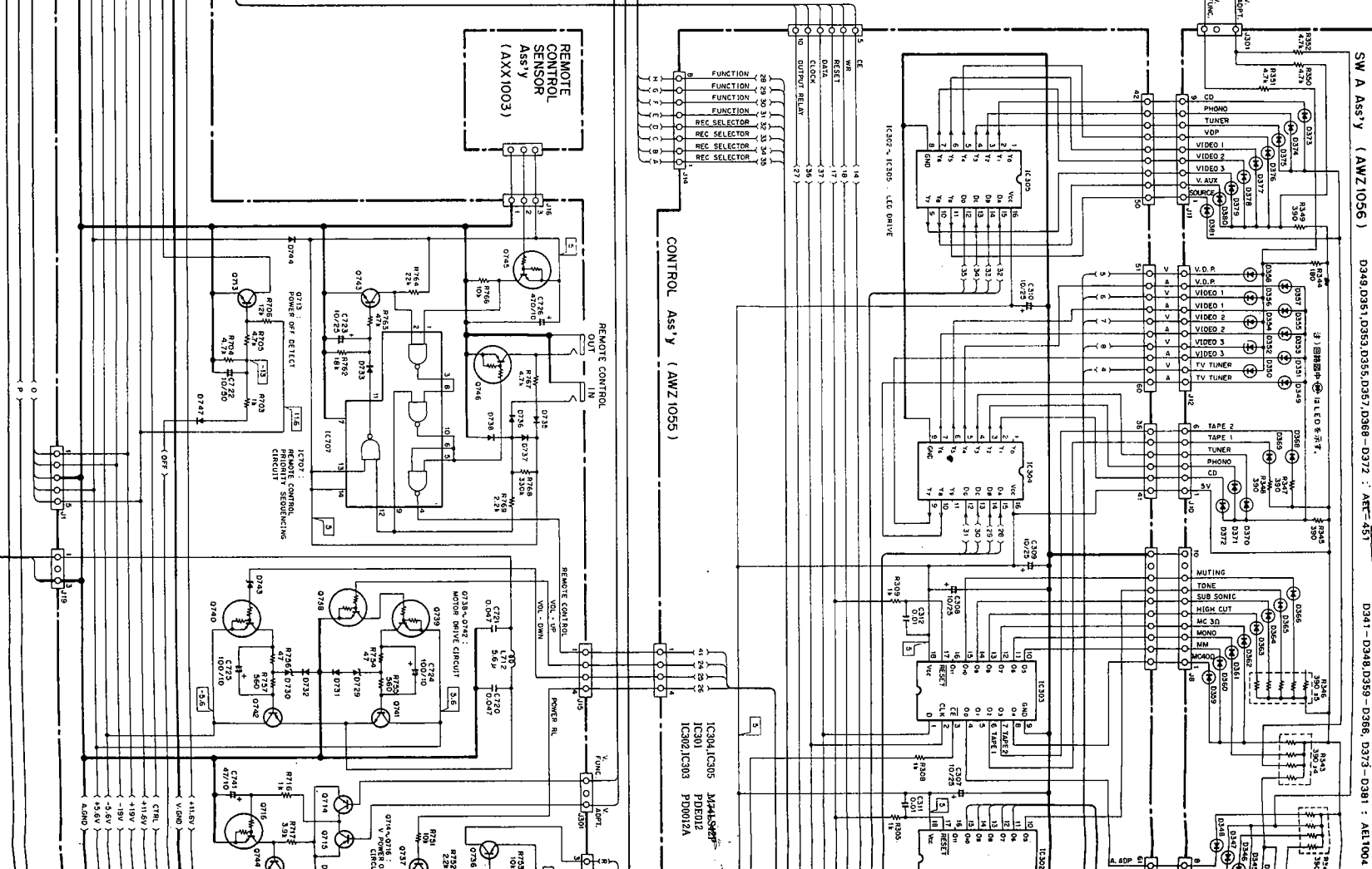
● E must indicate 0 V.

Note:
 #1. A → +SV: "TV/AUX"
 B → +SV: "VCR3"
 C → +SV: "VCR1" or "TV/AUX" or "VCR3"
 #2. A → +SV: "VCR1" or "SOURCE" with "VCR3"
 B → +SV: "VCR1 REC" or "SOURCE" with "VCR1"
 C → +SV: "TV/AUX REC" or "SOURCE" with "TV/AUX"

of right table indicates voltage (L: 0 V, H: 5 V).

Terminal No.	Remarks
2, 4, 7	8 pin output
5	6 pin signal
6	1 pin signal
7	3 pin signal
8	No output
9	No output

VIDEO ASS'Y (AW01004)



713, 0744, 0780, 0784, 0784 25C2705
 728, 0738, 0740, 0748 25C2878
 706, 0710, 0712 25C3584
 701, 0709, 0708, 0707, 0709 25K346
 711 25K346

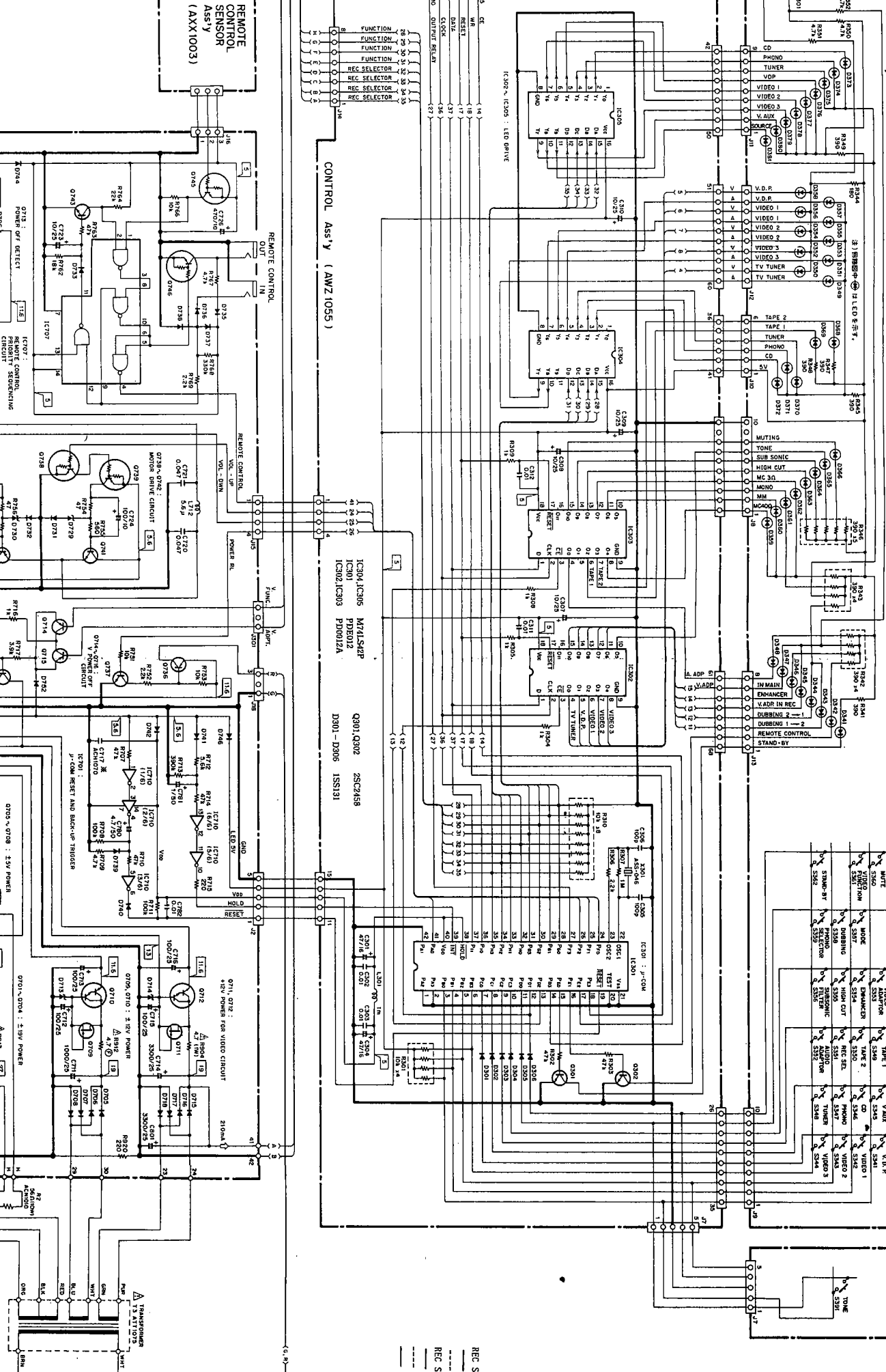
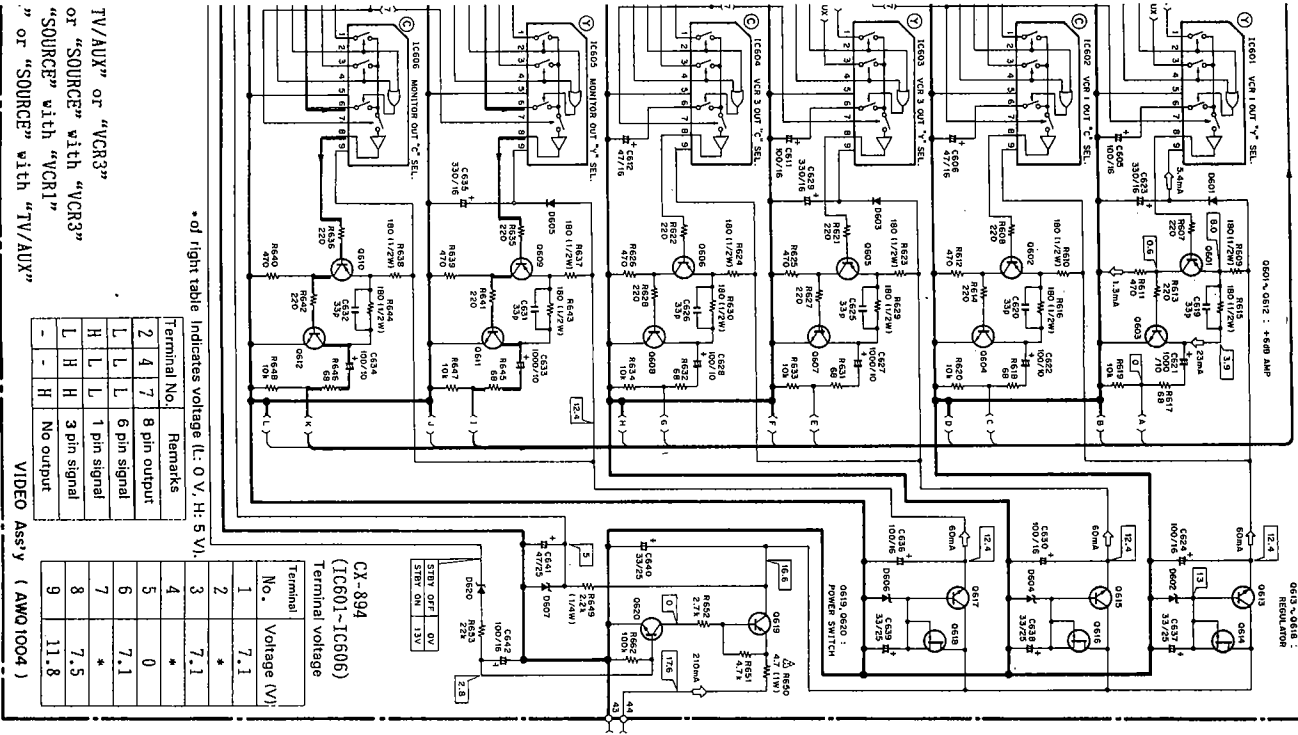
0713 25C2705
 0714 R013ES83
 0721 - 0723 R013ES83
 0753 R027ES8
 0708, 0710 R020ES82

D729, D730 R043ES81
 D738 - D742, D744, D746, D751, D753 R054ES82
 D752 R062ES8
 D715 - D718 R062ES82
 D701 - D708, D747 R062ES82

15S282
 10E280
 5S586

01-IC806	CX-894	0801-0802	0806-0809	25A1048	D802-D804-D806	R01-RE582
08-IC809	TC4058BP	0810		25A985	D808-D818	R05-1E581
	TC4058BP	0813-0815-0817		25C235	D801-D803-D805	1S522
		0803-0804-0807-0808-0811		25C248		11E2
		0812-0820				
		0814-0816-0818		25X248		

SW A Assy (AWZ1056) D348-D351-D353-D355-D357-D368-D372 : AEL-451 D341-D348-D355-D366-D373-D381 : AEL1004 D350-D352-D354-D356-D358 : AEL1005

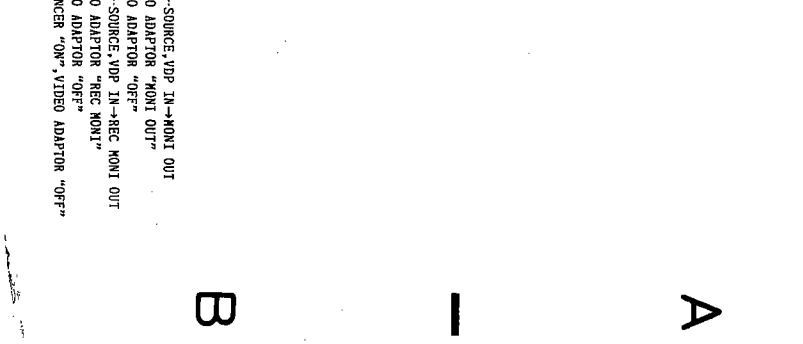
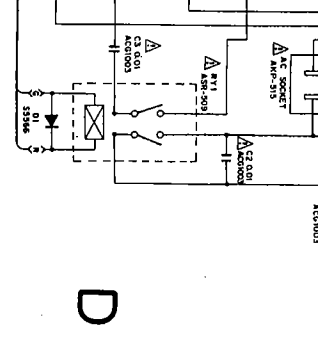
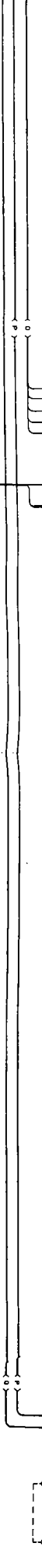
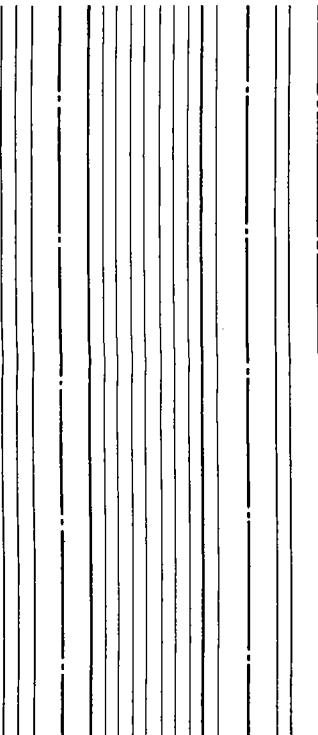
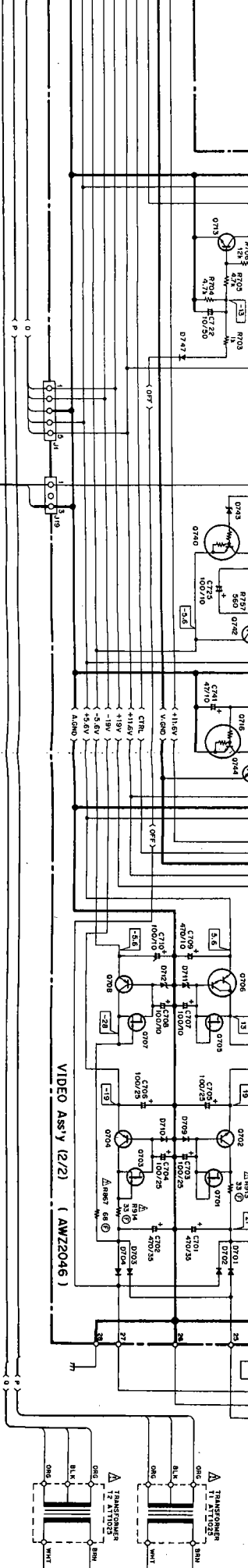


TV/AUX" or "VCR3"
or "SOURCE" with "VCR3"
or "SOURCE" with "VCR1"
or "SOURCE" with "TV/AUX"

*of right table indicates voltage (L: 0 V, H: 5 V).

Terminal No.	Remarks	Voltage (V)
1		7.1
2		*
3		7.1
4		*
5		0
6		7.1
7		7.1
8		*
9		11.8

VIDEO Assy (AWZ1004)

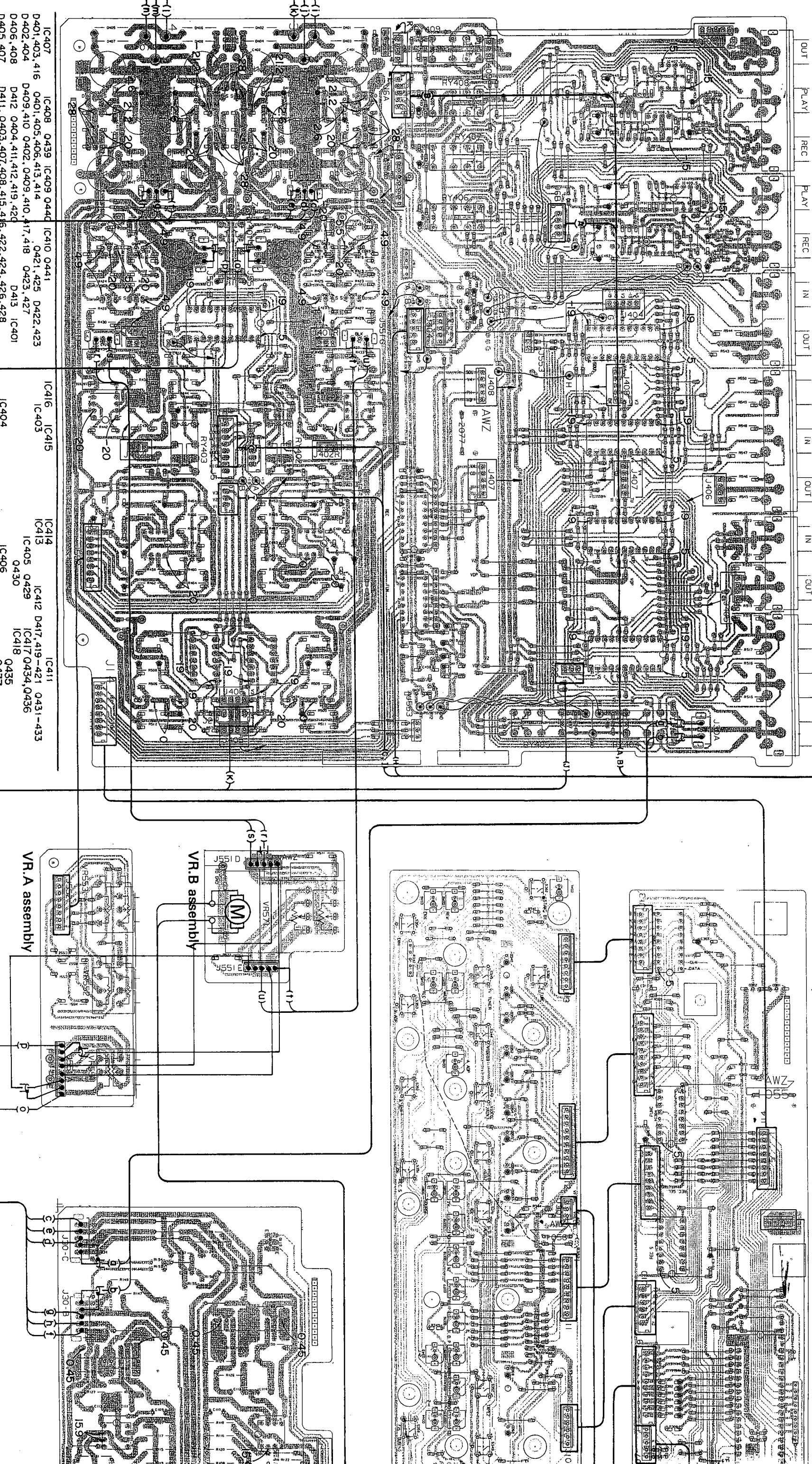


REC SEL...SOURCE, VPP IN-MONI OUT
---VIDEO ADAPTOR "MONI OUT"
---VIDEO ADAPTOR "VCR IN"
REC SEL...SOURCE, VPP IN-MONI OUT
---VIDEO ADAPTOR "REC MONI"
---VIDEO ADAPTOR "OFF"
---ENHANCER "ON", VIDEO ADAPTOR "OFF"

6. P.C. BOARDS CONNECTION DIAGRAM

AF assembly (AWZ2078)

Control assembly (AWZ1055)



4

5

6

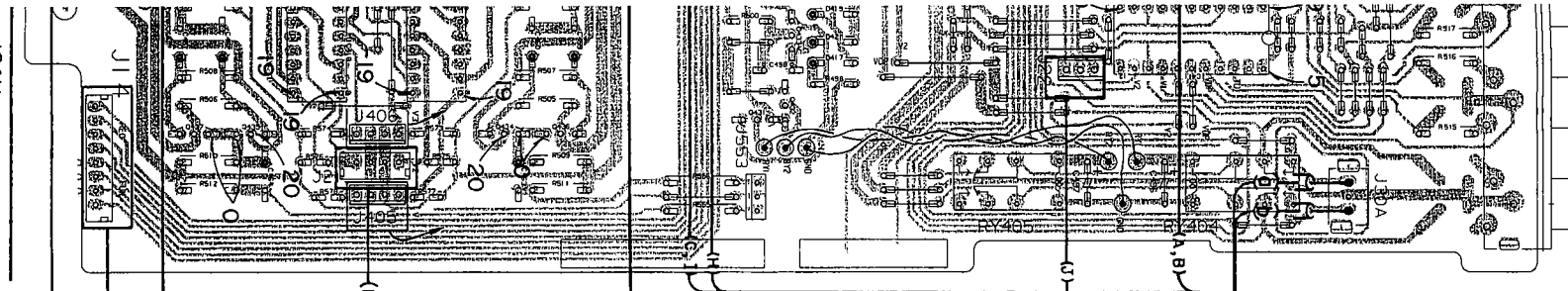
7

8

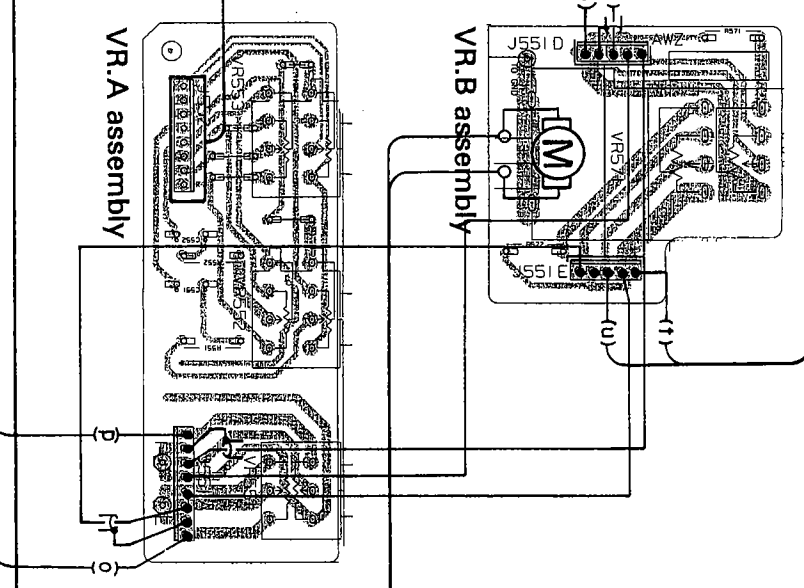
9

10

(A)(B)(C)(H)(I)

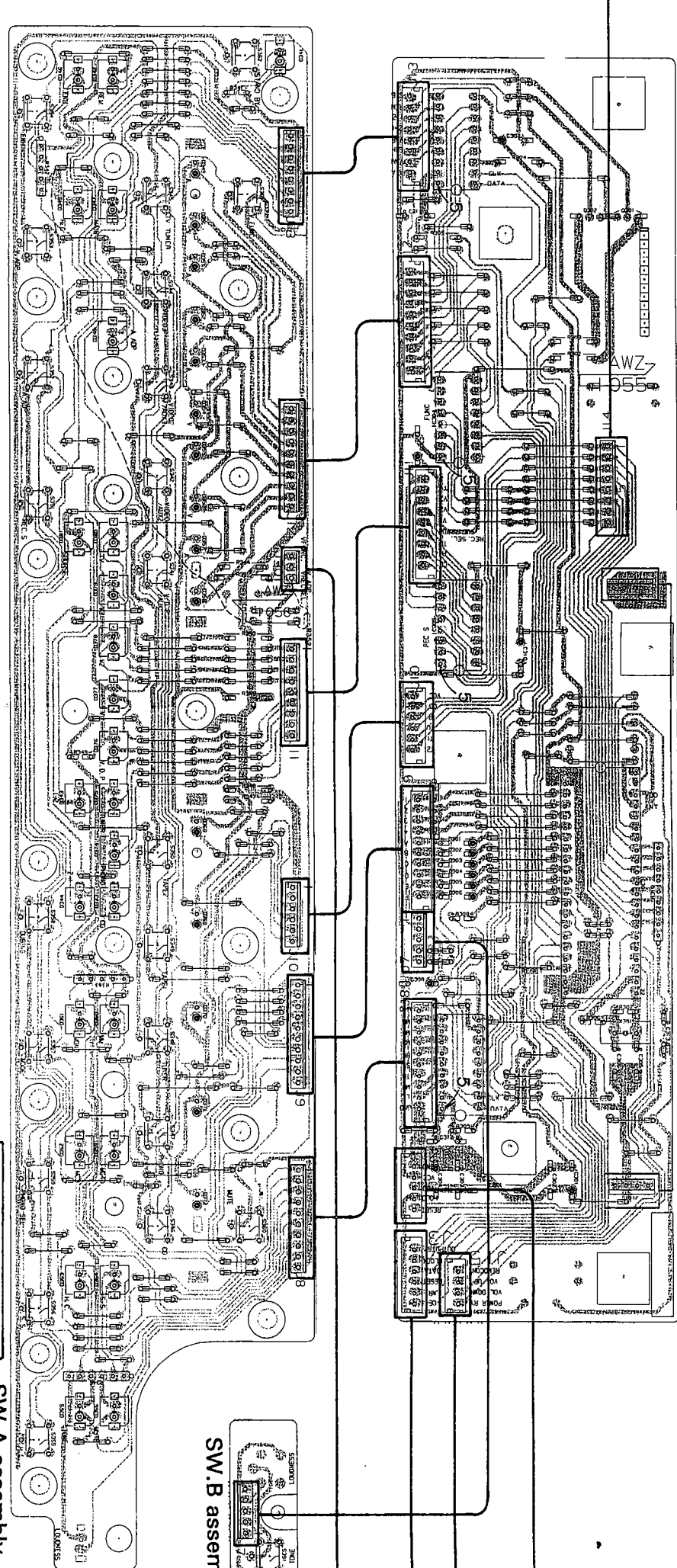


IC411
419-421 0431-433
417 0434, 0436
418 0435
0437



VR.B assembly

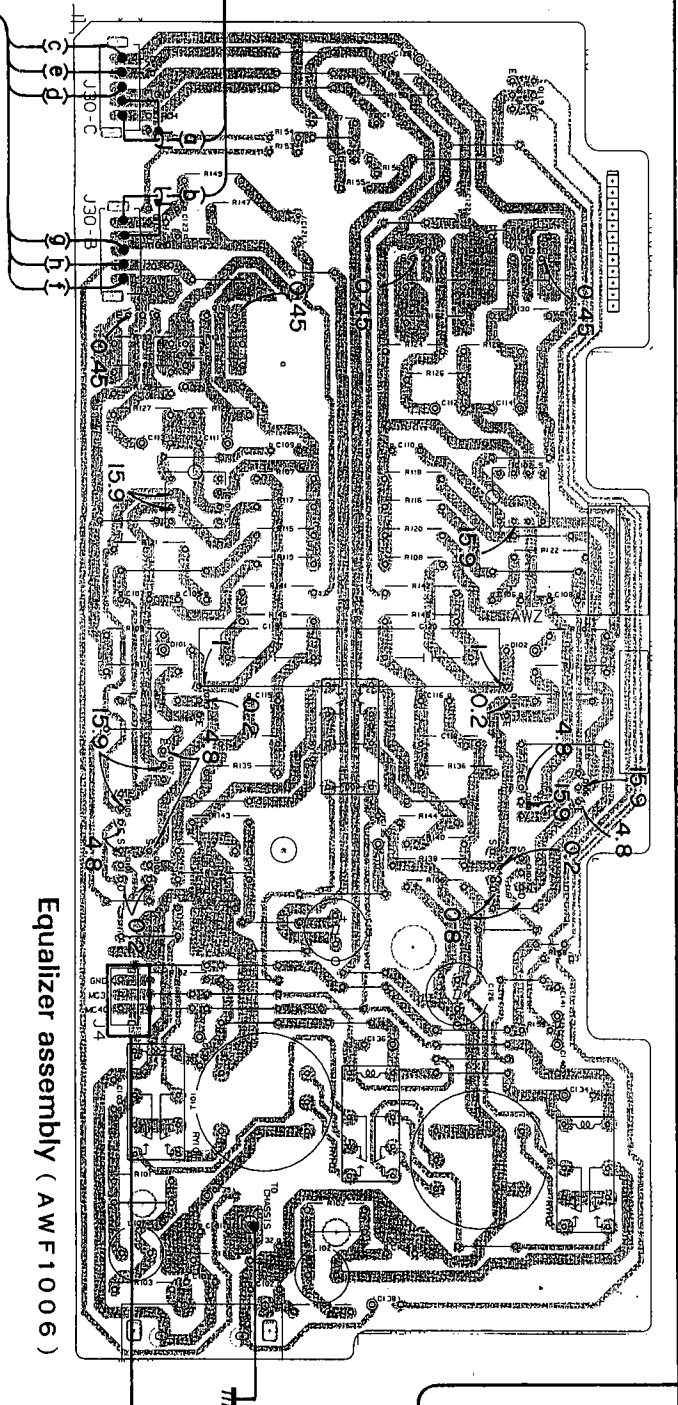
VR.A assembly



REMOTE CONTROL SENSOR Ass'y (AXX1003)

SW.A assembly (AWZ1056)

SW.B assembly



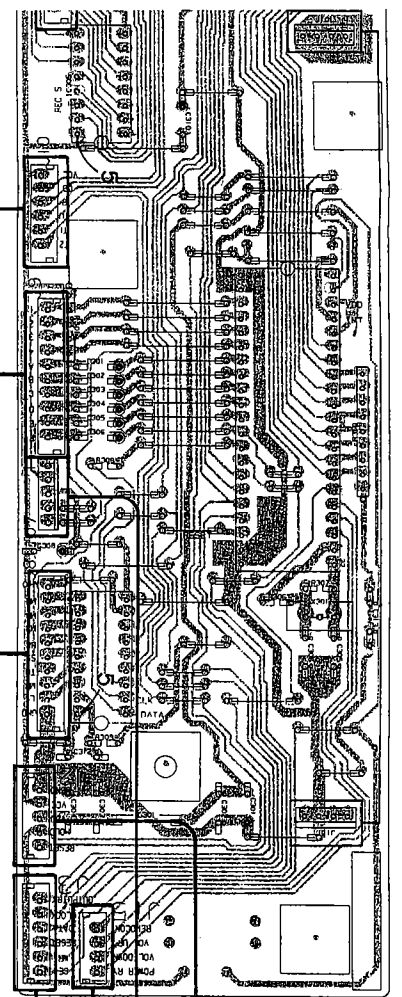
Equalizer assembly (AWF1006)

0737 0736
0730 0738 0739
0742 0741
0743, 0745, 746

0721, 722
0723-725 0733, 0732
IC701
0728
IC702

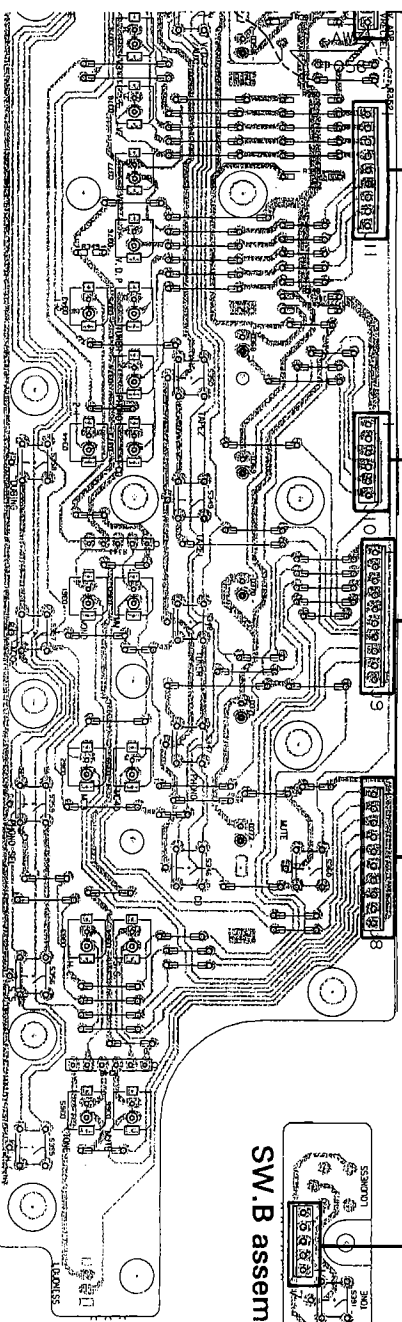
A R 7 R 9 10

(A)H9XCH(X)1



Video assembly
(AWZ2046)

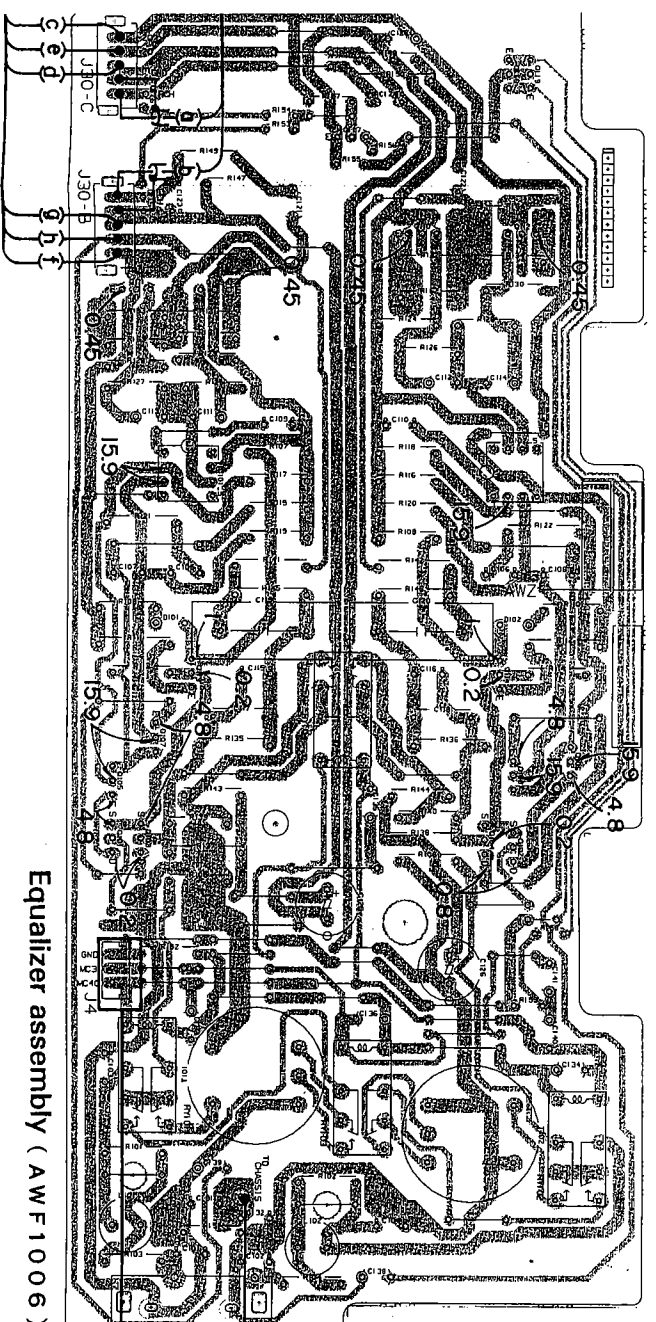
R2
560
ACN1010



REMOTE CONTROL
SENSOR Ass'y (AXX1003)

SW.A assembly
(AWZ1056)

SW.B assembly



Equalizer assembly (AWF1006)

0737 0736
0740 0738 0739
0742 0741 IC707
0743 0745 746

0721 722

0787 788

0723-725 0733 0732

IC701 0728 IC702

0731 0720 0735 0734 0719 0713 0729 730

0718 IC709 0717 0777

0761 763 IC703 0786

0747 0748

0781 0785 0783

0784 0780 0782

0714-716

0711 712 0744 0701-704

0779 0756 0770 0755 0789 0771 772

IC706 0752 0753

0740 0709

0774 0780 0776

0773 0724

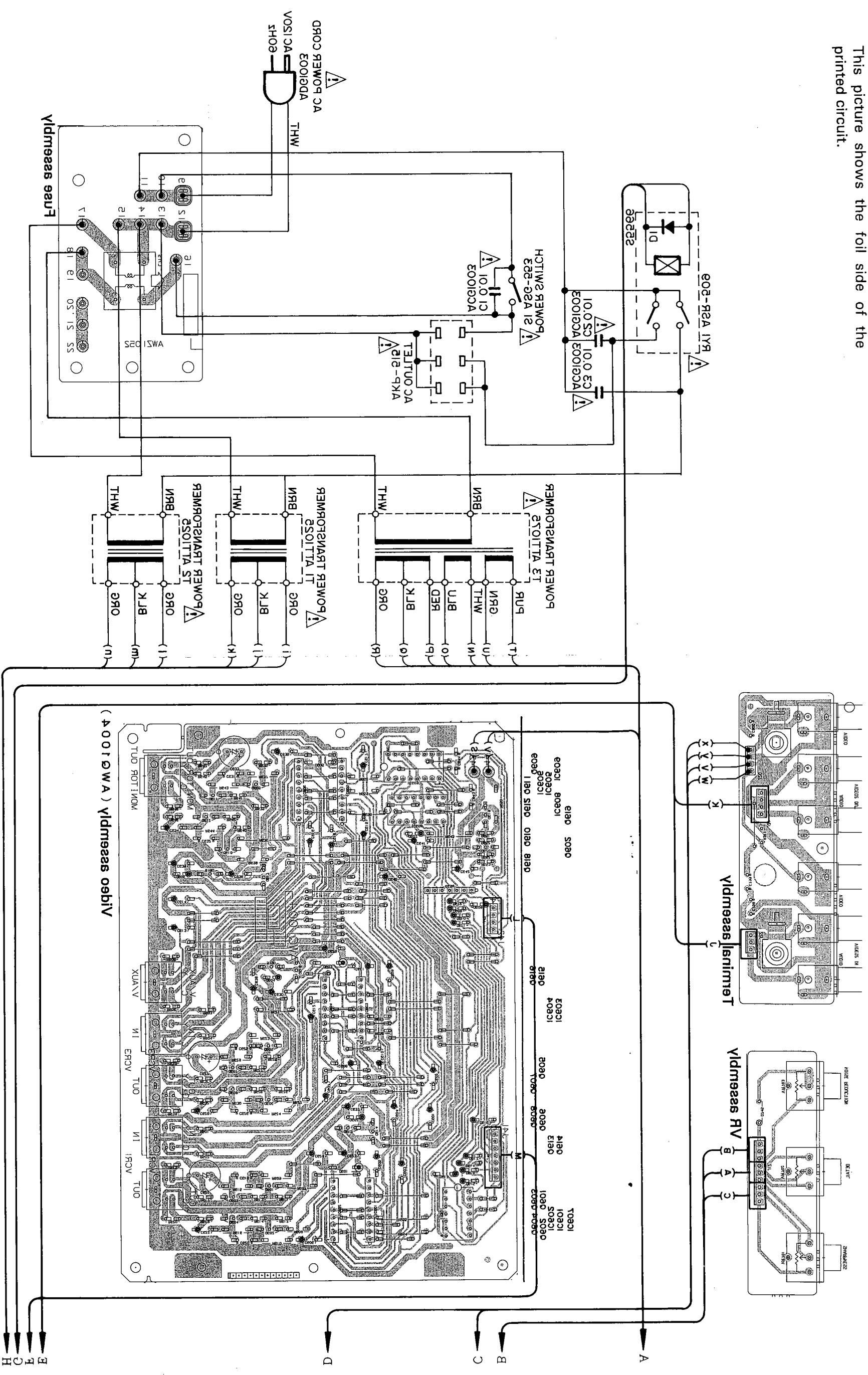
0749 0750

0754 0751

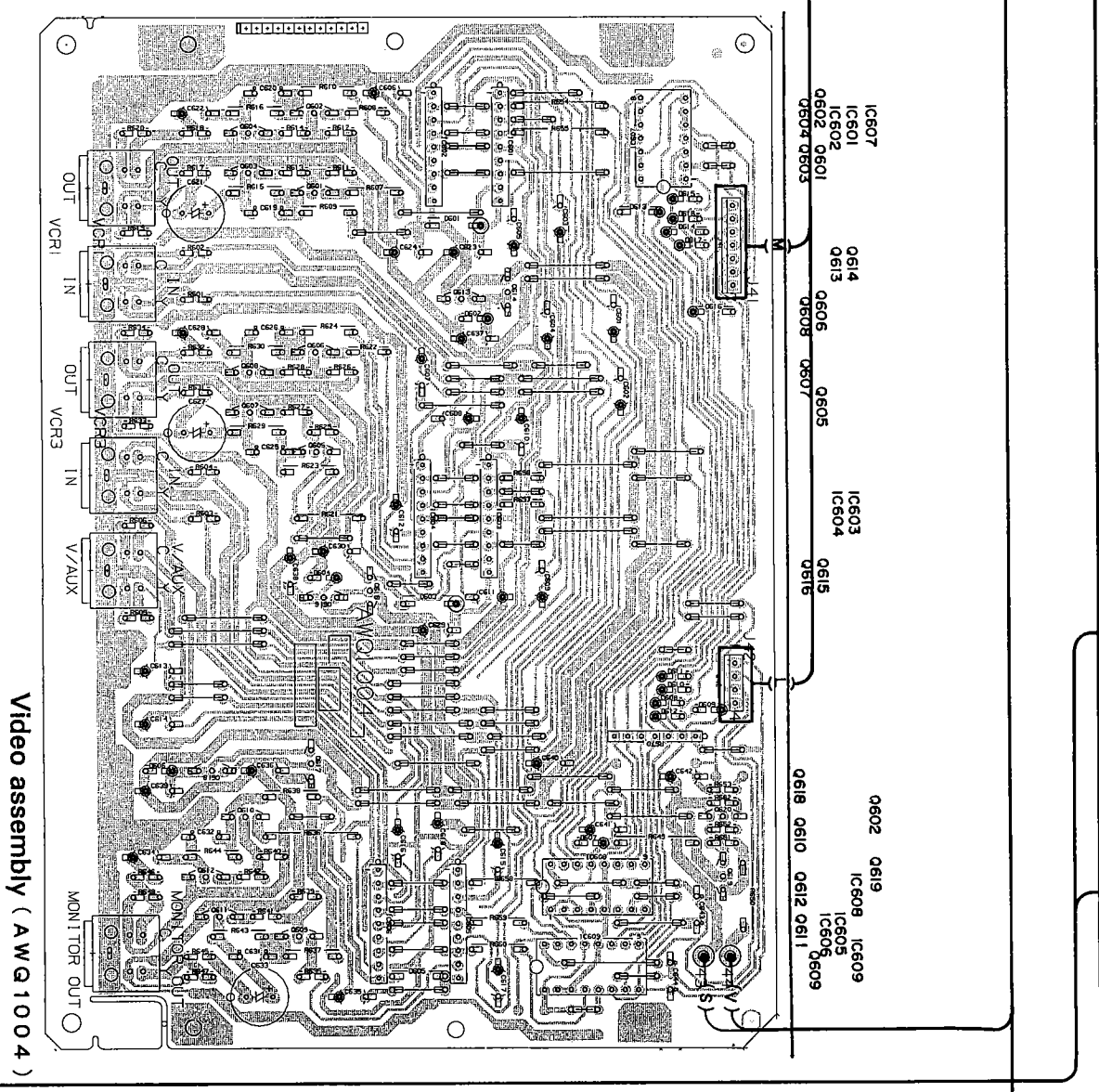
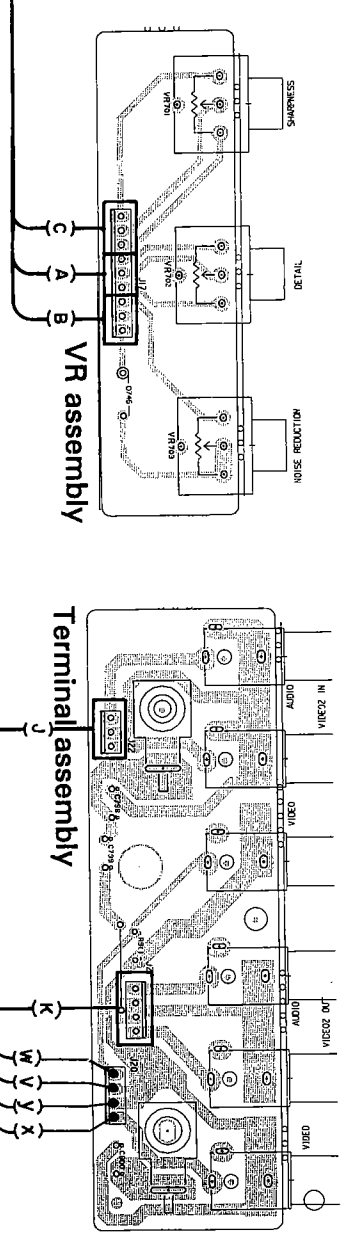
D C B A

F E C H

NOTE:
This picture shows the foil side of the printed circuit.



1 2 3 4 5 6



NOTE

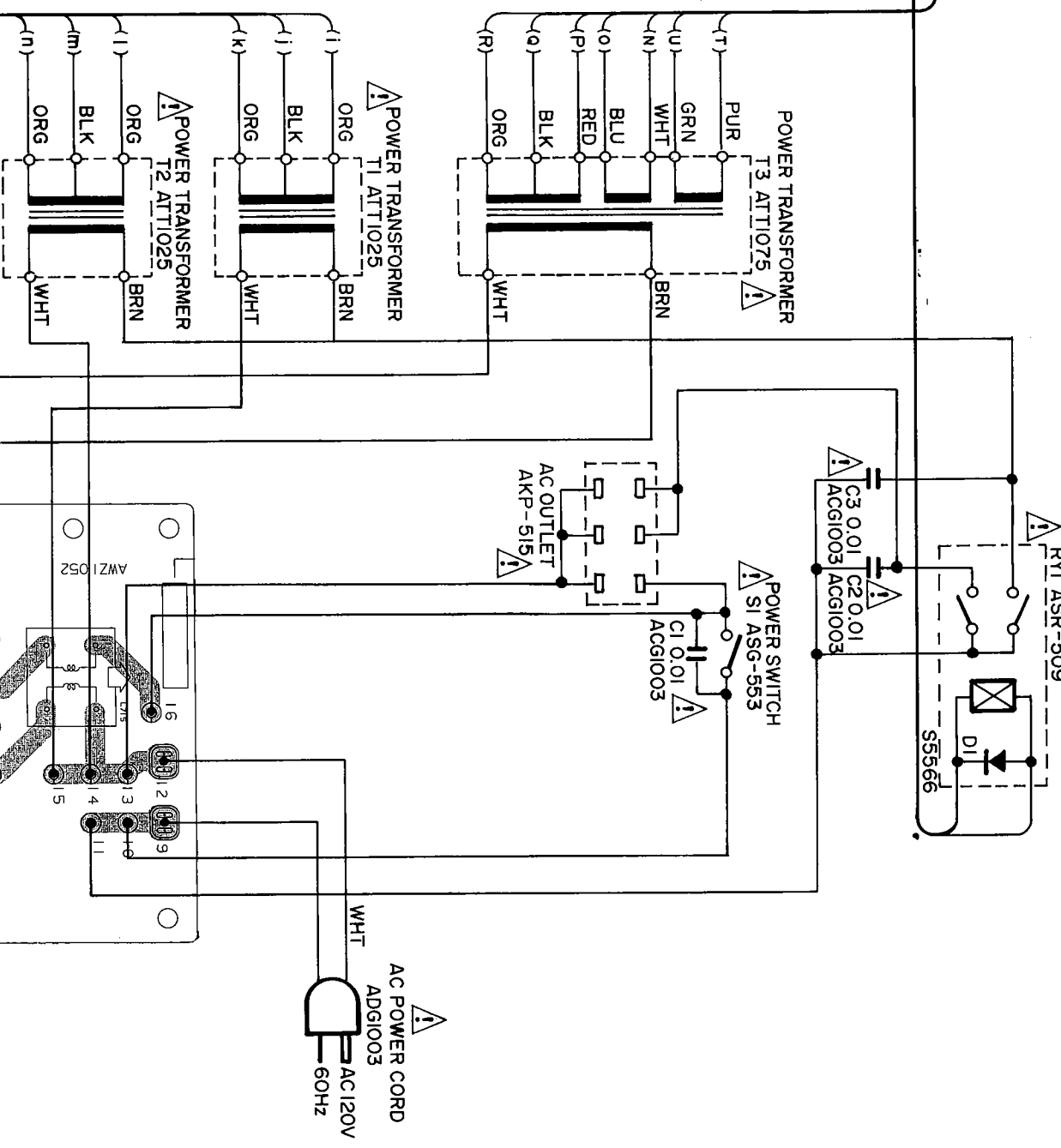
- The P.C.B. connection diagram is viewed from the parts mounted side.
- The parts which have been mounted on the board can be replaced with those shown with the corresponding wiring symbols listed in the following Table.

P.C.B. pattern diagram indication	Corresponding part symbol	Part Name
EO 0904	EO or ED	Transistor
0215	0215	Resistor type transistor
0203	0203	Diode
R237	R237	Resistor
CS13	CS13	Capacitor (polarity)
CS16	CS16	Capacitor (Non-polarity)

Others

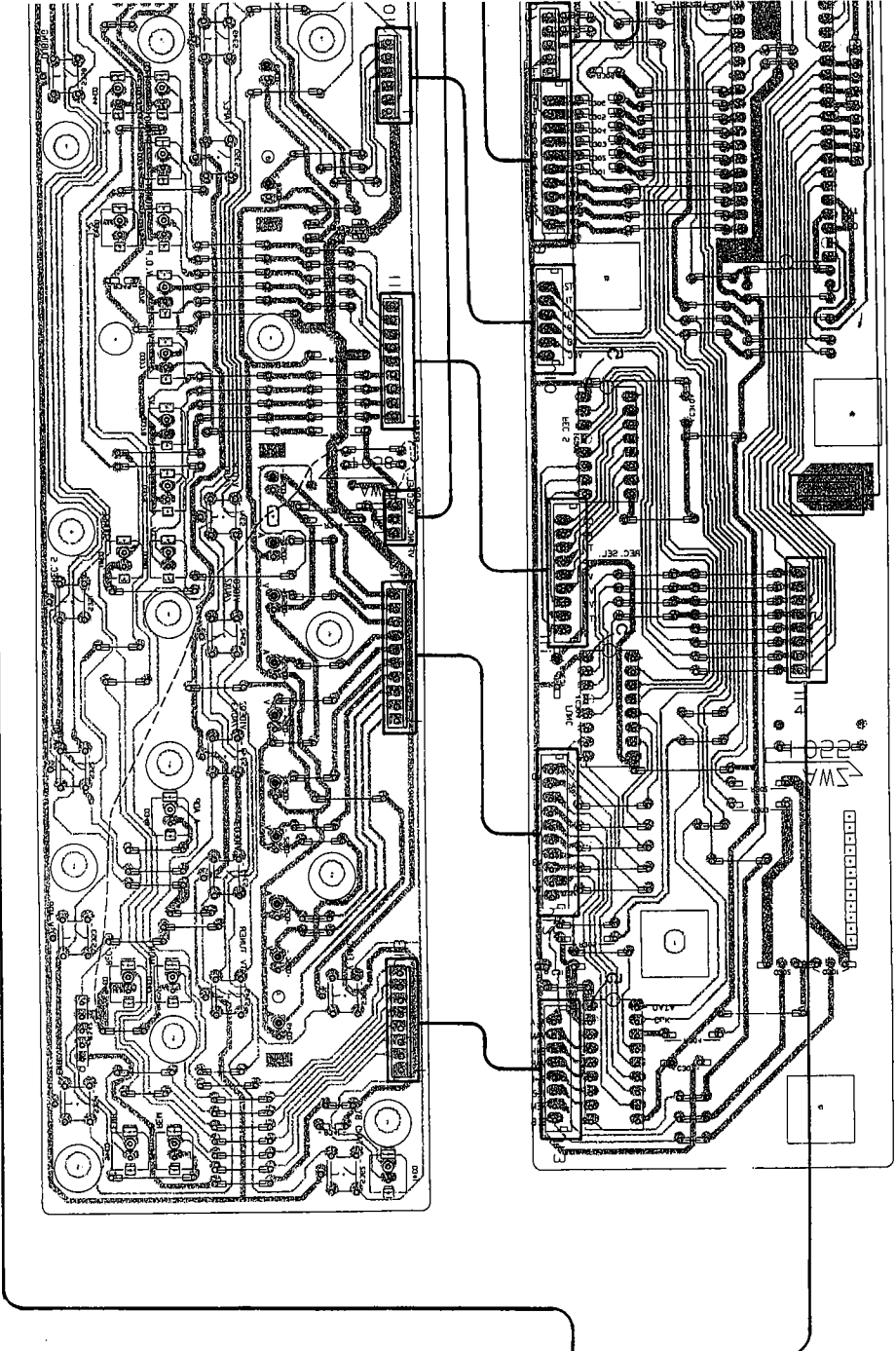
P.C.B. pattern diagram indication	Part Name
IC	IC
S	Switch
RV	Relay
L	Coil
F	Filter
VR	Variable resistor or Sintered resistor

- The capacitor terminal marked with @ (double circles) shows negative terminal.
- The diode terminal marked with @ (double circles) shows cathode side.
- The transistor terminal to which E is wired shows the emitter.

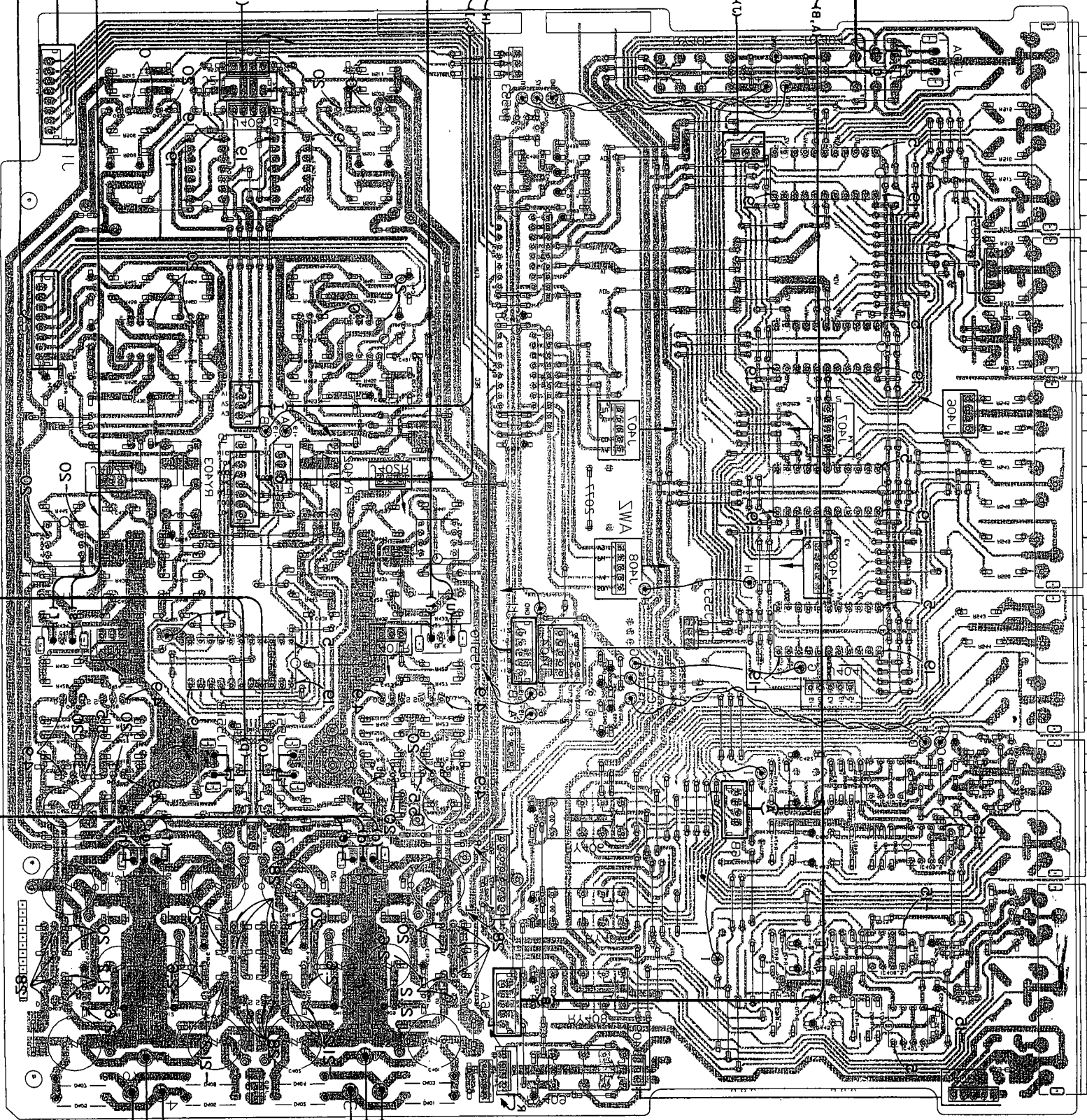


A B C D E F G H

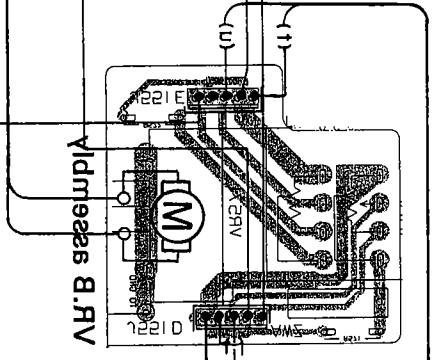
(2801 SWA) Vidmases Iontros



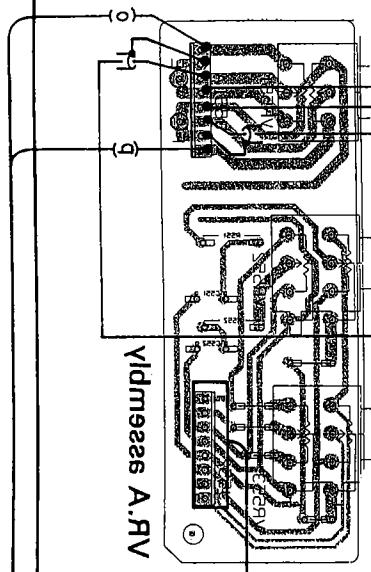
(8705 SWA) Vidmases JA



Vidmases B RV



Vidmases A RV



1142 CI
 1240 CI
 1241 CI
 1242 CI
 1243 CI
 1244 CI
 1245 CI
 1246 CI
 1247 CI
 1248 CI
 1249 CI
 1250 CI
 1251 CI
 1252 CI
 1253 CI
 1254 CI
 1255 CI
 1256 CI
 1257 CI
 1258 CI
 1259 CI
 1260 CI

1241 CI
 1242 CI
 1243 CI
 1244 CI
 1245 CI
 1246 CI
 1247 CI
 1248 CI
 1249 CI
 1250 CI
 1251 CI
 1252 CI
 1253 CI
 1254 CI
 1255 CI
 1256 CI
 1257 CI
 1258 CI
 1259 CI
 1260 CI

1241 CI
 1242 CI
 1243 CI
 1244 CI
 1245 CI
 1246 CI
 1247 CI
 1248 CI
 1249 CI
 1250 CI
 1251 CI
 1252 CI
 1253 CI
 1254 CI
 1255 CI
 1256 CI
 1257 CI
 1258 CI
 1259 CI
 1260 CI

1440 O14 CI
 1441 O14 CI
 1442 O14 CI
 1443 O14 CI
 1444 O14 CI
 1445 O14 CI
 1446 O14 CI
 1447 O14 CI
 1448 O14 CI
 1449 O14 CI
 1450 O14 CI
 1451 O14 CI
 1452 O14 CI
 1453 O14 CI
 1454 O14 CI
 1455 O14 CI
 1456 O14 CI
 1457 O14 CI
 1458 O14 CI
 1459 O14 CI
 1460 O14 CI

1440 O14 CI
 1441 O14 CI
 1442 O14 CI
 1443 O14 CI
 1444 O14 CI
 1445 O14 CI
 1446 O14 CI
 1447 O14 CI
 1448 O14 CI
 1449 O14 CI
 1450 O14 CI
 1451 O14 CI
 1452 O14 CI
 1453 O14 CI
 1454 O14 CI
 1455 O14 CI
 1456 O14 CI
 1457 O14 CI
 1458 O14 CI
 1459 O14 CI
 1460 O14 CI

D

C

B

A

7. PROGRAMMABLE REMOTE CONTROL UNIT (AXD1063)

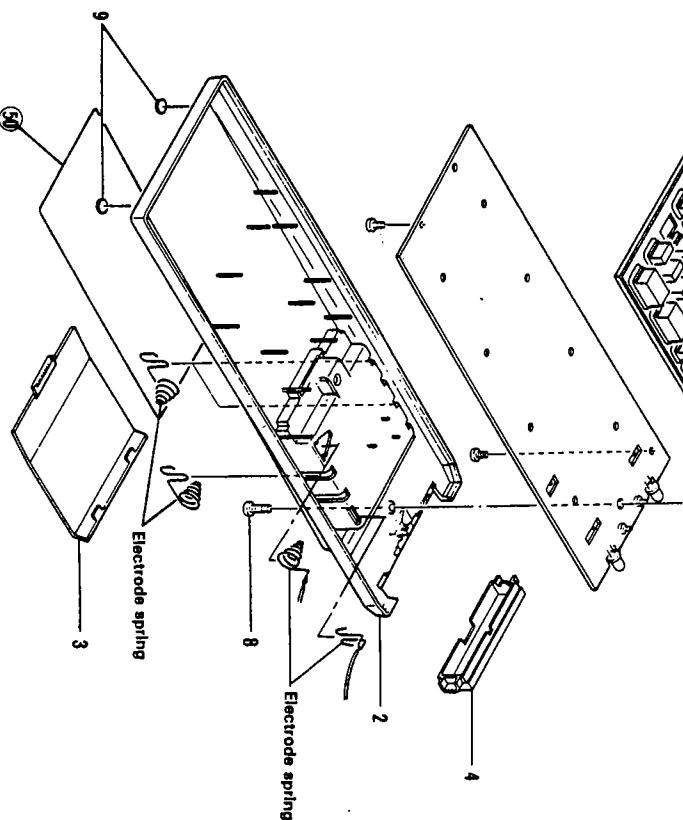
7.1 EXPLODED VIEWS AND PARTS LIST

- NOTES:
- Parts without part number cannot be supplied.
 - The Δ mark found on some component parts indicates the importance of the safety factor of the part. Therefore, when replacing, be sure to use parts of identical designation.
 - Parts marked by "●" are not always kept in stock. Their delivery time may be longer than usual or they may be unavailable.

PARTS LIST OF EXPLODED VIEWS

Mark	No.	Parts No.	Description
	1	AZH1033	Case (A)
	2	AZH1034	Case (B)
	3	AZH1035	Case (C)
	4	AZN1400	Filter
	5	AZA1086	Rubber switch
	6	AZS1042	Knob (AUDIO/VIDEO /AUX, USE/LEARN, DAT/TAPE)
	7	AZA1134	Name plate
	8	AZB1124	Screw
	9	AZN1401	Foot
	50		Rear name plate

※ When replacing the case No.2 (B) (AZH1034) by a new one, remove all electrode springs and install them into the new case (B).



7.2 ELECTRICAL PARTS LIST

- NOTES:
- Parts without part number cannot be supplied.
 - Parts marked by "●" are not always kept in stock. Their delivery time may be longer than usual or they may be unavailable.
 - The Δ mark found on some component parts indicates the importance of the safety factor of the part. Therefore, when replacing, be sure to use parts of identical designation.
 - When ordering resistors, first convert resistance values into code form as shown in the following examples.

Ex. 1 When there are 2 effective digits (any digit apart from 0), such as 560 ohm and 47k ohm (tolerance is shown by J = 5%, and K = 10%).

Ex. 2 When there are 3 effective digits (such as in high precision metal film resistors).

SEMICONDUCTORS

Mark	Symbol & Description	Part No.
	IC01	PD5068-A
	IC02	AZC1045
	IC03	AZC1046
	IC04	AZC1047
	IC05	AZC1048

RESISTORS

Mark	Symbol & Description	Part No.
	R01 (8.2K)	AZC1064
	R02 (4.7K)	AZC1065
	R03, R08 (33K)	AZC1066
	R04 (220K)	AZC1067
	R05, R17, R39 (10K)	AZC1068
	R06 (82K)	AZC1069
	R07, R11, R30-R38 (100K)	AZC1073
	R09 (6.8K)	AZC1070
	R10 (56K)	AZC1071
	R12 (1M)	AZC1072
	R13, R16 (680 Ω)	AZC1075
	R14 (3.9 Ω)	AZC1078
	R15 (10 Ω)	AZC1076
	R18, R22-R29 (47K)	AZC1077
	R19-R21 (2.2K)	AZC1074

SWITCH

Mark	Symbol & Description	Part No.
	S01 Slide switch (AUDIO/VIDEO/AUX)	AZC1079
	S02, S03 Slide switch (USE/LEARN, DAT/TAPE)	AZC1080
	S04 Tact switch (RESET)	AZC1081

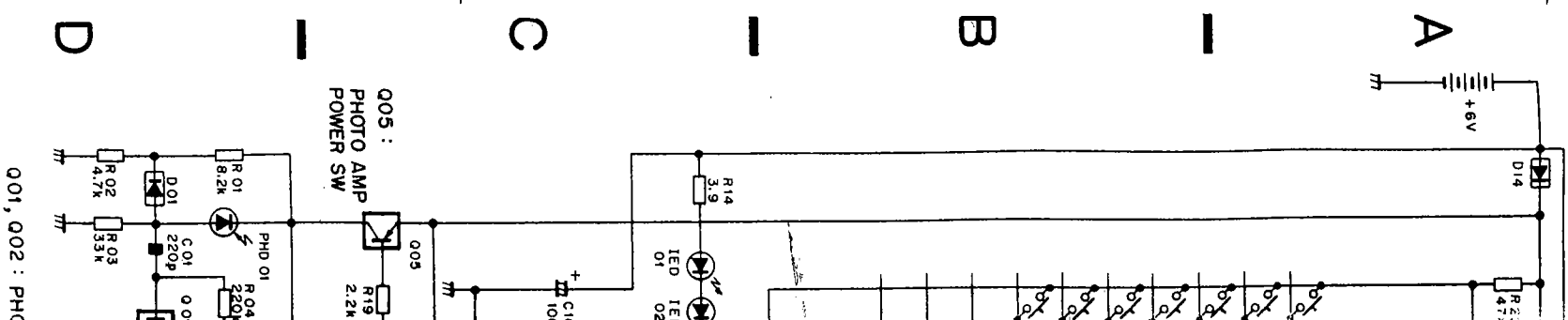
OTHERS

Mark	Symbol & Description	Part No.
	X1 Resonator (8MHz)	AZC1057

CAPACITORS

Mark	Symbol & Description	Part No.
	C01 (200P)	AZC1058
	C02 (33P)	AZC1059
	C03, C04 (0.001 μ F)	AZC1062
	C05, C06 (20P)	AZC1060
	C07 Electrolytic capacitor (4.7/6V)	CEAS4R7M6
	C08 (0.01)	AZC1061
	C09 Electrolytic capacitor (100 /6V)	CEAS101M6
	C10 Electrolytic capacitor (100/6V)	CEAS101M6
	C11 (0.01)	AZC1063

7.3 SCHEMATIC



001, 002 : PHC

XD1063)

7.2 ELECTRICAL PARTS LIST

NOTES:

- Parts without part number cannot be supplied.
- Parts marked by "⊗" are not always kept in stock. Their delivery time may be longer than usual or they may be unavailable.
- The Δ mark found on some component parts indicates the importance of the safety factor of the part. Therefore, when replacing, be sure to use parts of identical designation.
- When ordering resistors, first convert resistance values into code form as shown in the following examples.
- Ex. 1 When there are 2 effective digits (any digit apart from 0), such as 560 ohm and 47k ohm (tolerance is shown by J = 5%, and K = 10%):
560Ω 56 X 10¹ 561..... RDI4PS ⊗ ⊗ ⊗ J
47kΩ 47 X 10⁴ 473..... RDI4PS ⊗ ⊗ ⊗ J
0.5Ω 0R5..... RNZH ⊗ ⊗ ⊗ K
1Ω 010..... RSIP ⊗ ⊗ ⊗ K
- Ex. 2 When there are 3 effective digits (such as in high precision metal film resistors):
5.62kΩ 562 X 10¹ 5621..... RNI4SR ⊗ ⊗ ⊗ F

time may be longer

NS

in

which

IDIO/VIDEO
JX, USE/LEARN,
T/TAPE)

ie plate

(AZH1034) by
springs and in-

SEMICONDUCTORS

Mark	Symbol & Description	Part No.
	IC01	PD5068-A
	IC02	AZC1045
	IC03	AZC1046
	IC04	AZC1047
	IC05	AZC1048

	001, 002	AZC1050
	003, 004	AZC1051
	005	AZC1052

	D01, D02, D07-D14	AZC1056
	D03-D06	AZC1049
	PHD01	AZC1055
	LED01, LED02	AZC1054
	LED01, LED02	AZC1053

SWITCH

Mark	Symbol & Description	Part No.
	S01 Slide switch (AUDIO/VIDEO/AUX)	AZC1079
	S02, S03 Slide switch (USE/LEARN, DAT/TAPE)	AZC1080
	S04 Tact switch (RESET)	AZC1081

CAPACITORS

Mark	Symbol & Description	Part No.
	C01 (200P)	AZC1058
	C02 (33P)	AZC1059
	C03, C04 (0.001μF)	AZC1062
	C05, C06 (20P)	AZC1080
	C07 Electrolytic capacitor (4.7/6V)	CEAS4R7M6
	C08 (0.01)	AZC1061
	C09 Electrolytic capacitor (100 /8V)	CEAS101M6
	C10 Electrolytic capacitor (100/6V)	CEAS101M6
	C11 (0.01)	AZC1063

RESISTORS

Mark	Symbol & Description	Part No.
	R01 (8.2K)	AZC1064
	R02 (4.7K)	AZC1065
	R03, R08 (33K)	AZC1066
	R04 (220K)	AZC1067
	R05, R17, R39 (10K)	AZC1068

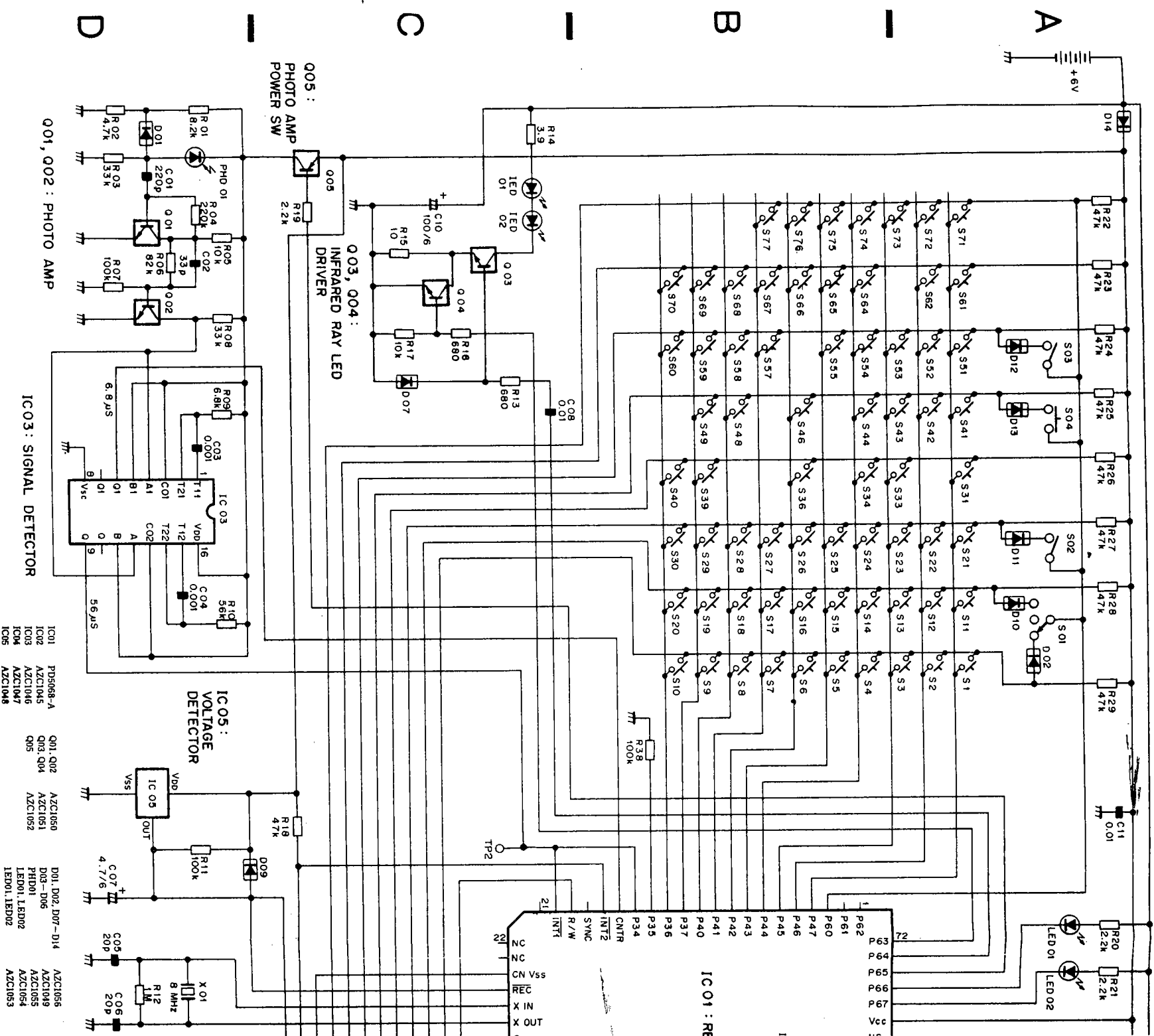
	R06 (82K)	AZC1069
	R07, R11, R30-R38 (100K)	AZC1073
	R09 (6.8K)	AZC1070
	R10 (56K)	AZC1071
	R12 (1M)	AZC1072

	R13, R16 (880Ω)	AZC1075
	R14 (3.9Ω)	AZC1078
	R15 (10Ω)	AZC1076
	R18, R22-R29 (47K)	AZC1077
	R19-R21 (2.2K)	AZC1074

OTHERS

Mark	Symbol & Description	Part No.
	X1 Resonator (8MHz)	AZC1057

7.3 SCHEMATIC DIAGRAM



1

2

3

37

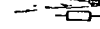
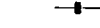

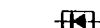
1

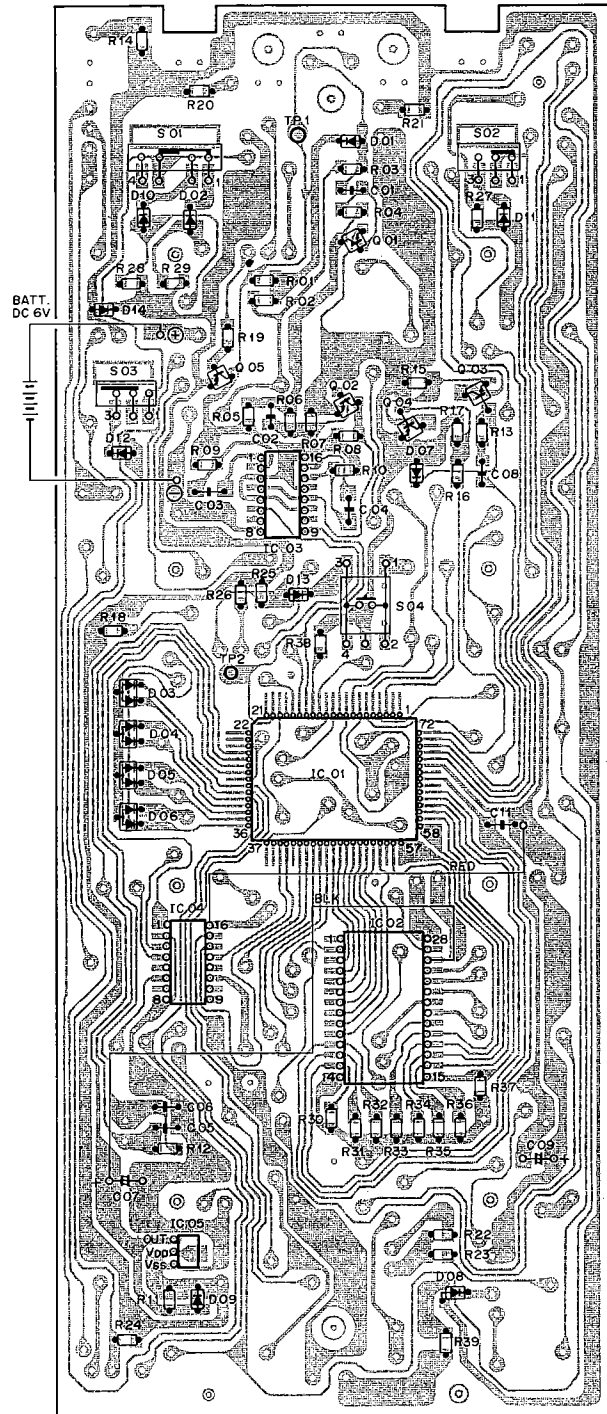
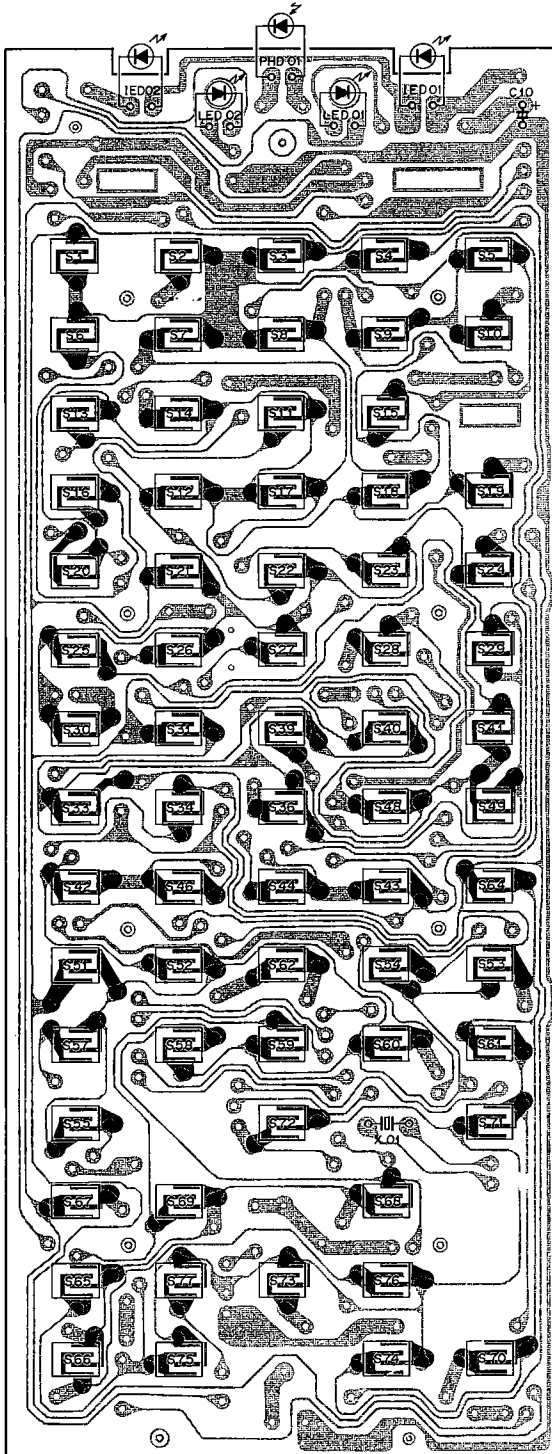
2

3

7.4 P.C. BOARD PATTERNS

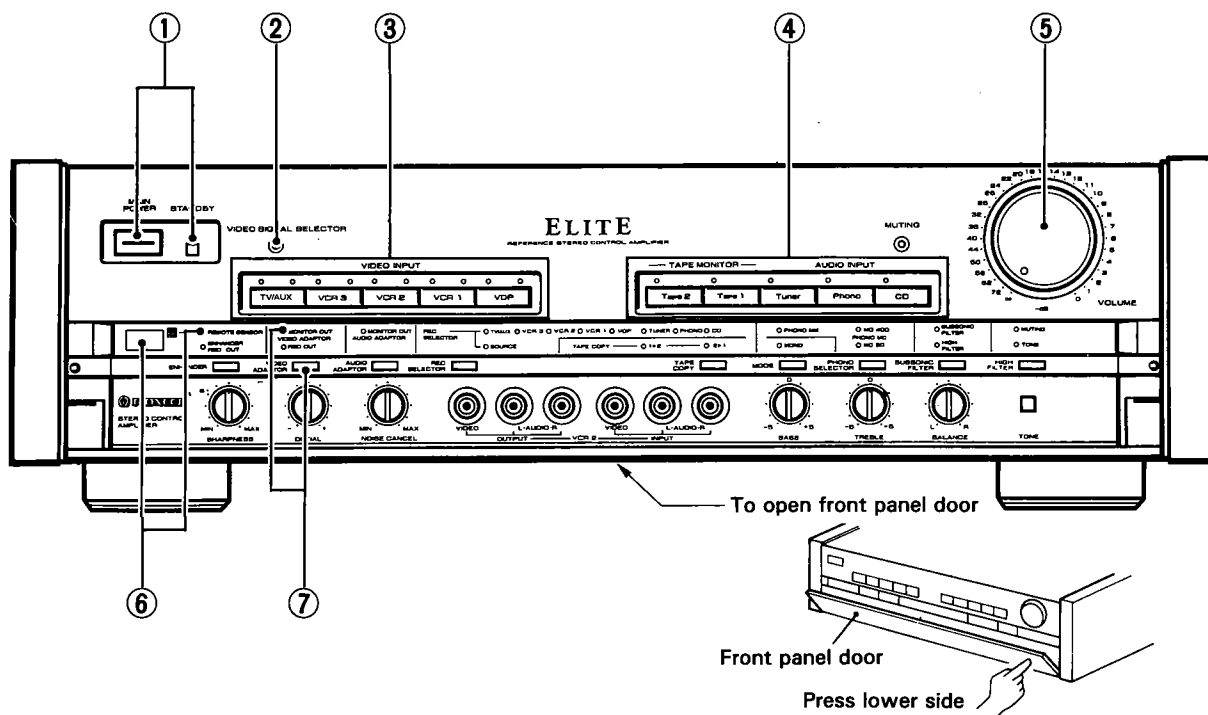
NOTE:

-  : Indicates a chip resistor.
-  : Indicates a chip capacitor.
-  : Indicates a chip transistor.
-  : Indicates a chip diode.



8. PANEL FACILITIES

FRONT PANEL



① MAIN POWER switch

STANDBY switch/indicator

- When the power switch is in the ON position, power can be turned ON/OFF to the amplifier and to the rear panel REMOTE CONTROL power outlets.
- Power is turned ON/OFF alternately with each press of the switch; when in the OFF (stand-by) position, the indicator will light (when in the ON position, the indicator will flash, then go out).
- The accessory remote control unit can be used to turn this switch ON/OFF, with the result that the remote control unit can be used from the listening position to control power not only to the amplifier, but also to those components connected to the rear panel REMOTE CONTROL power outlets.
- When not using the amplifier for an extended period of time, be sure to set the main power switch to the OFF position.

② VIDEO SIGNAL SELECTOR switch

Use to switch the video component's video signal regardless of the position of the input selector switch. The video indicators (green) above the input selector switch will light in order.

Even when listening to an audio component (record player, tuner, etc.), this switch can be used to perform video recording and playback while continuing to listen to the audio component playback.

③ VIDEO INPUT selector switches/indicators

Use to select the video component for playback.

- [VDP] — To play back the video disc player connected to the rear panel VDP terminals.
- [VCR1] — To play back the VCR connected to the rear panel VCR1 terminals.
- [VCR2] — To play back the VCR connected to the front panel VCR2 terminals.

[VCR3] — To play back the VCR connected to the rear panel VCR3 terminals.

[TV/AUX] — To use the TV tuner or video equipment connected to the rear panel TV/AUX terminals.

The red indication light during audio playback, while the green indicators light during video playback.

This switch is interlocked with the AUDIO INPUT selector.

④ AUDIO INPUT selector switches/indicators

Use to select the audio component for playback (the indicator will light).

[CD]: For compact disc player.

[Phono]: For turntable.

[Tuner]: For listening to FM/AM broadcasts with a tuner.

[Tape 1]: To use the tape deck connected to the rear panel Tape 1 terminals.

[Tape 2]: To use the tape deck connected to the rear panel Tape 2 terminals.

The Tape 1 and 2 switches go ON or OFF alternately each time they are pressed, independently of the other switches.

⑤ VOLUME control

Use to adjust the sound volume. At the [∞] position, sound will not be heard, while at the [0] position, sound volume will be at its maximum.

⑥ REMOTE SENSOR/indicators

⑦ VIDEO ADAPTOR switch/indicator

Set to the ON position when using the component connected to the rear panel ADAPTOR terminals VIDEO IN and OUT.